

TENDITALIA

I feel at home

Ed. 15 – 22/06/2023

Sky

Visual comfort

2150 mm ca. 



Visual comfort



Hi tech



Trend & design



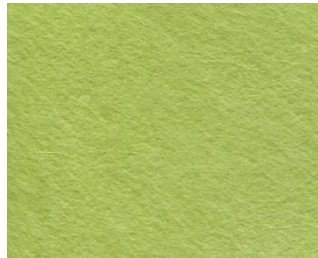
Architectural fabrics



001



005



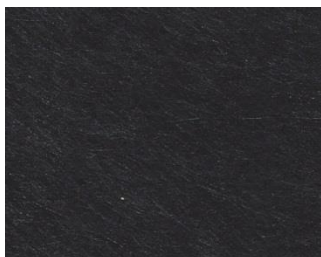
006



011



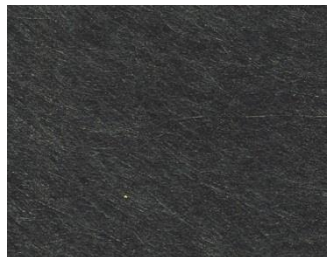
013



052



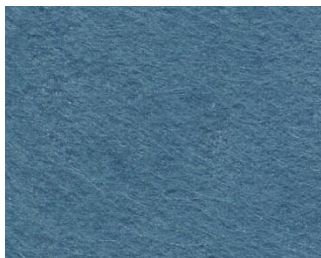
053



054



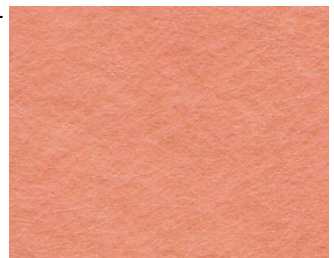
062



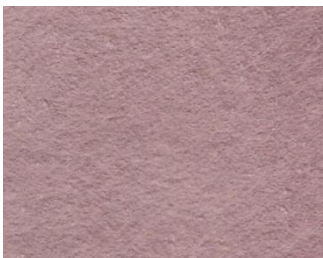
114



121



123



124



125



151

Dati tecnici	Technical details	Technisches Datenblatt	Standard
Altezza tessuto	Fabric height	Breite	2100 mm
Composizione	Fabric description	Materialbeschreibung	100% Poliestere 100% Polyester 100% Polyester
Resinatura	Coating	Beschichtung	100% <small>Resina poliestere Resins poliester Beschichtung polyester</small>
Peso tessuto	Fabric weight	Gewebegewicht	45±5 (g/m ²)
Peso rivestimento	Coating weight	Beschichtungsgewicht	10±5 (g/m ²)
Peso totale	Total weight	Gesamtgewicht	55±10 (g/m ²)
Spessore	Thickness	Stoffdicke	0.20±0.05 mm
Comportamento alla fiamma	Flame resistance	Flammhemmung	Non ignifugo Flammable Entflammbar
Comportamento da appeso (rullo)	Hanging behaviour (roller) (MA34)**	Hängeverhalten (Rollos)	(%) < n.a.
Stabilità dimensionale (6h, 80°C)	Dimensional stability	Maßbeständigkeit	Trama (Weft, Schuß) < 1 (%) Ordito (Warp- Kette) < 1 (%)
Manutenzione	Maintenance	Pflege- und Reinigungshinweise	Pulire con panno umido Cleaning with a damp cloth Bedingt feucht abwischbar
Prodotto privo di formaldeide	Formaldehyde Free	Ohne Formaldehide	No No Nein
Esente da PVC e alogeni	PVC and halogen Free	PVC – und halogenfrei	Si Yes Ja
Protezione da muffe e batteri (trattamento hygieguard)	Guarantees product resistance to attacks and insurgence of bacteria and moulds	Optimaler Schutz in Feuchträumen – fungizid und bakteristatisch	Si Yes Ja

Valori energetici	Energetic value	Energetische Werte	Standard
Stabilità alla luce	Light fastness	Lichtechtheit	≥ 5/6 (DIN EN ISO 105 B02)

G-tot*
(EN 14501)

Color	013	001	062	006	123	005	151	124	053	114	125	054	121	011	052
G-tot ± 0.01	0.45	0.44	0.49	0.48	0.45	0.43	0.45	0.45	0.48	0.49	0.49	0.49	0.49	0.49	0.49

* valore "g tot" calcolato considerando doppio vetro basso emissivo, spazio riempito con Argon (U: 1.2 W/m²K e g: 0.59 e tende chiuse

** MA: metodo di analisi interno Tenditalia

**g tot" value calculated considering Double-glazing, low emissivity coating, space filled with Argon, Glass Type C (U: 1.2 W/m²K and g: 0.59) and closed curtains

**MA: TENDITALIA'S internal method analysis

*Wert "g tot" berechnet Doppelverglasung mit thermoreflektierender Beschichtung, Zwischerraum mit Argon gefüllt (U: 1,2 W/m² K und g 0,59) bei geschlossenem Lamellenvorhang

**MA: Tenditalia interne Prüfmethode

Comportamento alla luce
(EN 410)

Behaviour to the light

Lichtreflektion

Color ± 2%	013	001	062	006	123	005	151
Riflessione luce / light reflection / Reflektion	50	52	8	15	48	51	48
Trasmissione / light transmission / Transmission	45	45	31	26	45	24	45
Assorbimento / light absorption / Absorption	5	3	61	59	7	25	7

	124	053	114	125	054	121	011	052
Riflessione luce / light reflection / Reflektion	49	15	8	19	15	10	21	3
Trasmissione / light transmission / Transmission	44	20	31	23	21	12	36	17
Assorbimento / light absorption / Absorption	7	65	61	58	64	78	43	80

Classificazione di schermatura

Performance classes

Leistungsklasse

(EN 14501)

	013	001	062	006	123	005	151
Controllo del bagliore/Glare controle/Blendschutz	0	0	0	0	0	0	0
Privacy notturna/Night privacy/Sichtschutz bei Nacht	0	0	0	0	0	0	0
Contatto visivo con l'esterno/ Visual contact with outside/Durchsicht	0	0	0	0	0	0	0
Utilizzazione luce diurna/ Daylight utilisation/Tageslichtnutzung	4	4	3	3	4	2	4
Trasmissione energetica/ Heat protection/ sommerlicher Wärmeschutz***	1	1	1	1	1	1	1

	124	053	114	125	054	121	011	052
Controllo del bagliore/Glare controle/Blendschutz	0	0	0	0	0	0	0	0
Privacy notturna/Night privacy/Sichtschutz bei Nacht	0	0	0	0	0	0	0	0
Contatto visivo con l'esterno/ Visual contact with outside/Durchsicht	0	0	0	0	0	0	0	0
Utilizzazione luce diurna/ Daylight utilisation/Tageslichtnutzung	4	2	2	1	1	2	2	1
Trasmissione energetica/ Heat protection/ sommerlicher Wärmeschutz***	1	1	1	1	1	1	1	1

*** vetro C (iso 14501) U= 1,2 g= 0,59

*** glass C (iso 14501) U=1,2 g=0,59

*** verglasung C (iso 14501) U=1,2 g=0,59

Per la classificazione completa secondo la norma EN 14501, vai al sito: www.tenditalia14501.com
Please click here for a complete classification according to Norm EN14501: www.tenditalia14501.com
Für die Klassifikation nach EN 14501 klicken Sie bitte hier : www.tenditalia14501.com