

# Architectural fabrics

## Screen Collection



TENDITALIA  
*I feel at home*



Visual comfort



Hi tech



Trend & design



Architectural fabrics



0103



TENDITALIA  
*I feel at home*



## Architectural fabrics

### Screen Collection



PRINTABLE



ANTISTATIC



Specifiche di prodotto

Product specification

Produktleistungen

Specifiche di prodotto	Product specification	Produktleistungen	
Composizione	Fabric description	Materialbeschreibung	100% poliester 100% polyester 100% Polyester
Peso totale	Total weight	Gesamtgewicht	270 ± 15 (g/m <sup>2</sup> )
Spessore	Thickness	Stoffdicke	0,45 ± 0,02 (mm)
Comportamento alla fiamma	Flame resistance	Flammhemmung	Ignifugo Flame retardant Schwer entflammbar
Manutenzione	Maintenance	Pflege - und Reinigungshinweise	Pulire con panno umido Cleaning with a damp cloth Bedingt feucht abwischbar



0101

Tv 32 Ts 31 Rs 60 As 9  
T uv 10,6 G tot 0,38 Fc 0,64



0105

Tv 22 Ts 24 Rs 51 As 25  
T uv 8,4 G tot 0,41 Fc 0,69



0159

Tv 8 Ts 9 Rs 25 As 66  
T uv 4,2 G tot 0,49 Fc 0,83



5959

Tv 4 Ts 4 Rs 8 As 88  
T uv 3,9 G tot 0,54 Fc 0,92



0202

Tv 24 Ts 26 Rs 49 As 25  
T uv 9,4 G tot 0,41 Fc 0,70



0103

Tv 11 Ts 15 Rs 30 As 55  
T uv 5,4 G tot 0,47 Fc 0,80



5907

Tv 5 Ts 5 Rs 7 As 88  
T uv 4,1 G tot 0,55 Fc 0,93



Dati tecnici

Technical details

Technisches Datenblatt

Standard

OF Fattore di apertura

Openness factor

Öffnungsfaktor

ASHRAE Standard 74-1988 3 (%)

Struttura tessuto

Fabric structure

Gewebebindung

Metodo interno  
Internal method  
Interne Prüfmethode  
Panama - 18 x 16 (O x T)

Solidità alla luce

Light fastness

Lichtechtheit

ISO 105 B02 ≥ 6

Stabilità dimensionale (6h, 80°C)

Dimensional stability (6h, 80°C)

Maßbeständigkeit (6h, 80°C)

Metodo interno  
Internal method  
Interne Prüfmethode  
≤ 1,0 ordito e trama (%)  
≤ 1,0 warp and weft (%)  
≤ 1,0 Kette und Schuss (%)

Resistenza alla rottura

Tensile strenght

Reissfestigkeit

UNI EN ISO 1421:2000  
ordito (warp, Kette): 1500 ± 160 (N)  
trama (weft, Schuss): 1500 ± 170 (N)

Allungamento alla rottura

Elongation at break

Bruchdehnung

UNI EN ISO 1421:2000  
ordito (warp, Kette): 21,0 ± 2,0 (%)  
trama (weft, Schuss): 4,0 ± 3,0 (%)

Resistenza alla lacerazione

Tearing strenght

Weiterreissfestigkeit

UNI EN ISO 4674-1:2003  
ordito (warp, Kette): 175 ± 7 (N)  
trama (weft, Schuss): 215 ± 7 (N)

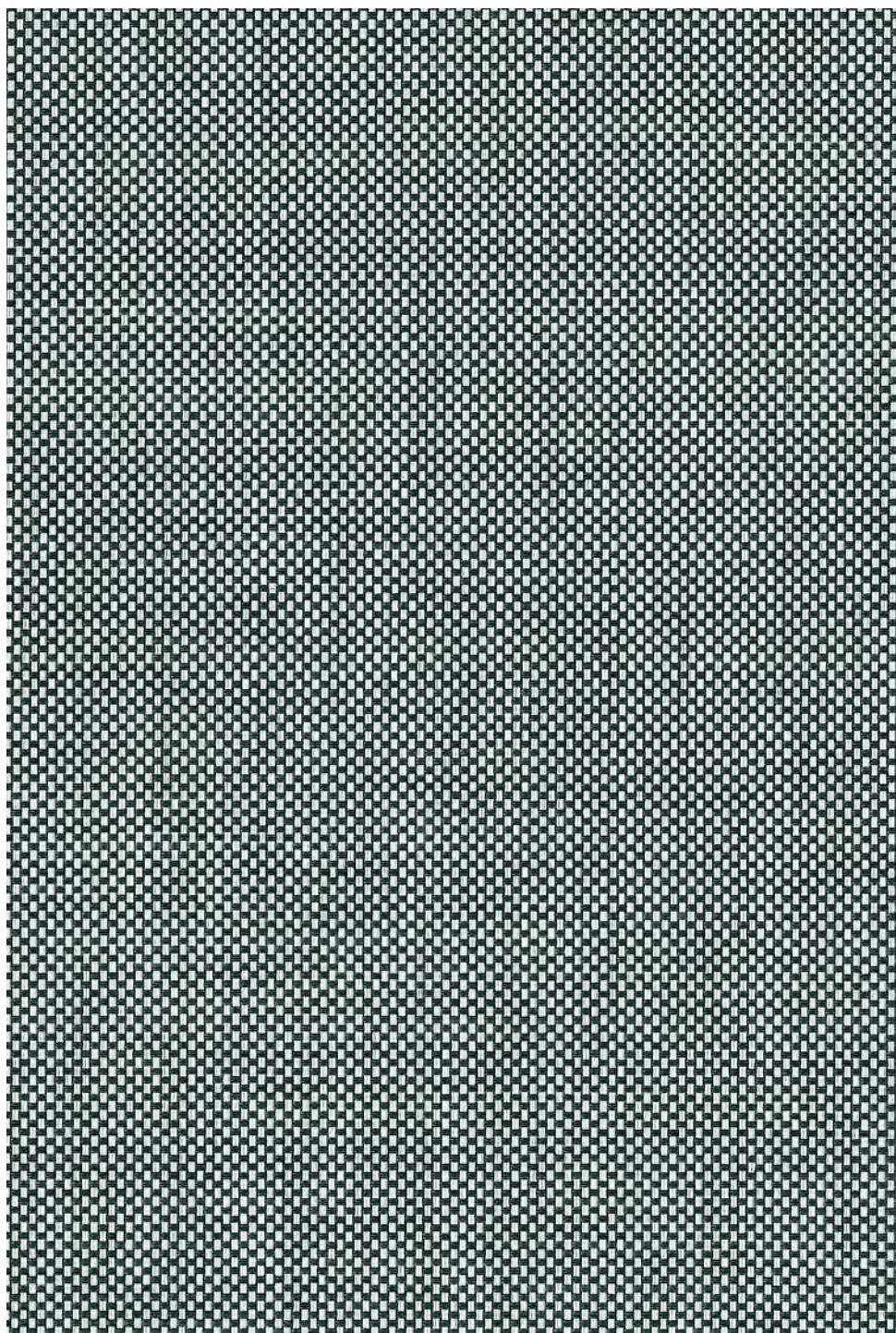
I valori sopra indicati sono calcolati secondo le normative riportate nella scheda tecnica  
Above mentioned values are calculated according to the corresponding specifications in Technical data sheets  
Die oben genannten Werte werden gemäß den entsprechenden Angaben in den technischen Datenblättern berechnet

# Net



ENERGY SAVING

OF 5%

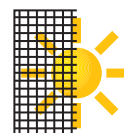


0151



## Architectural fabrics

### Screen Collection



OUTDOOR



INDOOR



PRINTABLE



ZIP



Specifiche di prodotto	Product specification	Produktleistungen	
Composizione	Fabric description	Materialbeschreibung	23% poliestere - 77% PVC 23% polyester - 77% PVC 23% Polyester - 77% PVC
Peso totale	Total weight	Gesamtgewicht	450 ± 20 (g/m <sup>2</sup> )
Spessore	Thickness	Stoffdicke	0,60 ± 0,05 (mm)
Comportamento alla fiamma	Flame resistance	Flammhemmung	Ignifugo Flame retardant Schwer entflammbar
Manutenzione	Maintenance	Pflege - und Reinigungshinweise	Pulire con acqua e sapone Cleaning with water and soap Mit Wasser und geeignetem Reiniger abwaschbar



<p>0101</p> <p>Tv 25 Ts 27 Rs 61 As 12 T uv 8,8 G tot 0,39 Fc 0,56</p>	<p>0105</p> <p>Tv 12 Ts 15 Rs 46 As 39 T uv 6,9 G tot 0,45 Fc 0,65</p>	<p>0505</p> <p>Tv 10 Ts 12 Rs 34 As 54 T uv 8,0 G tot 0,50 Fc 0,72</p>	<p>5951</p> <p>Tv 7 Ts 7 Rs 9 As 84 T uv 7,1 G tot 0,61 Fc 0,87</p>
<p>0102</p> <p>Tv 19 Ts 23 Rs 58 As 19 T uv 6,9 G tot 0,41 Fc 0,58</p>	<p>0151</p> <p>Tv 11 Ts 12 Rs 32 As 56 T uv 7,2 G tot 0,51 Fc 0,73</p>	<p>0551</p> <p>Tv 9 Ts 10 Rs 23 As 67 T uv 8,4 G tot 0,55 Fc 0,79</p>	<p>5959</p> <p>Tv 7 Ts 7 Rs 4 As 89 T uv 6,8 G tot 0,63 Fc 0,90</p>

Dati tecnici	Technical details	Technisches Datenblatt	Standard	
OF Fattore di apertura	Openness factor	Öffnungsfaktor	ASHRAE Standard74-1988	5%
Struttura tessuto	Fabric structure	Gewebebindung	Metodo interno Internal method Interne Prüfmethode	Panama - 17 x 17 (O x T)
Solidità alla luce	Light fastness	Lichtechtheit	ISO 105 B02	≥ 6
Stabilità dimensionale (6h, 80°C)	Dimensional stability (6h, 80°C)	Maßbeständigkeit (6h, 80°C)	Metodo interno Internal method Interne Prüfmethode	≤ 1,0 ordito e trama (%) ≤ 1,0 warp and weft (%) ≤ 1,0 Kette und Schuss (%)
Resistenza alla rottura	Tensile strenght	Reissfestigkeit	UNI EN ISO 1421:2000	ordito (warp, Kette): 1400 ± 100 (N) trama (weft, Schuss): 1300 ± 100 (N)
Allungamento alla rottura	Elongation at break	Bruchdehnung	UNI EN ISO 1421:2000	ordito (warp, Kette): 15,0 ± 3,0 (%) trama (weft, Schuss): 15,0 ± 3,0 (%)
Resistenza alla lacerazione	Tearing strenght	Weiterreissfestigkeit	UNI EN ISO 4674-1:2003	ordito (warp, Kette): 80 ± 10 (N) trama (weft, Schuss): 90 ± 10 (N)

I valori sopra indicati sono calcolati secondo le normative riportate nella scheda tecnica  
Above mentioned values are calculated according to the corresponding specifications in Technical data sheets  
Die oben genannten Werte werden gemäß den entsprechenden Angaben in den technischen Datenblättern berechnet

# ResPECT



OF 3%



Il nuovo **SCREEN** Tenditalia, realizzato con un filo di qualità originato dal riciclo di plastica di prima scelta. **ResPECT** è il risultato di un processo di «**UPCYCLING**» unico e certificato, capace di intercettare le bottiglie in plastica subito dopo il consumo, in modo da evitarne il deterioramento.

 **TENDITALIA**  
*i feel at home*



It is a **SCREEN** made with a quality yarn that originates from first choice plastic and is the result of a unique and certified «**UPCYCLING**» system capable of intercepting plastic bottles immediately after consumption in order to avoid deterioration of the PET plastic.

Neuer, hundertprozentig recycelter Sonnenschutz von Tenditalia  
Die Herstellung des Fadens erfolgt mit einem mechanischen Umwandlungsprozeß von der Plastikflasche in einen Polymerfaden ohne Einsatz von umweltbelastenden chemischen Stoffen.

 **TENDITALIA**  
*i feel at home*



Architectural  
fabrics

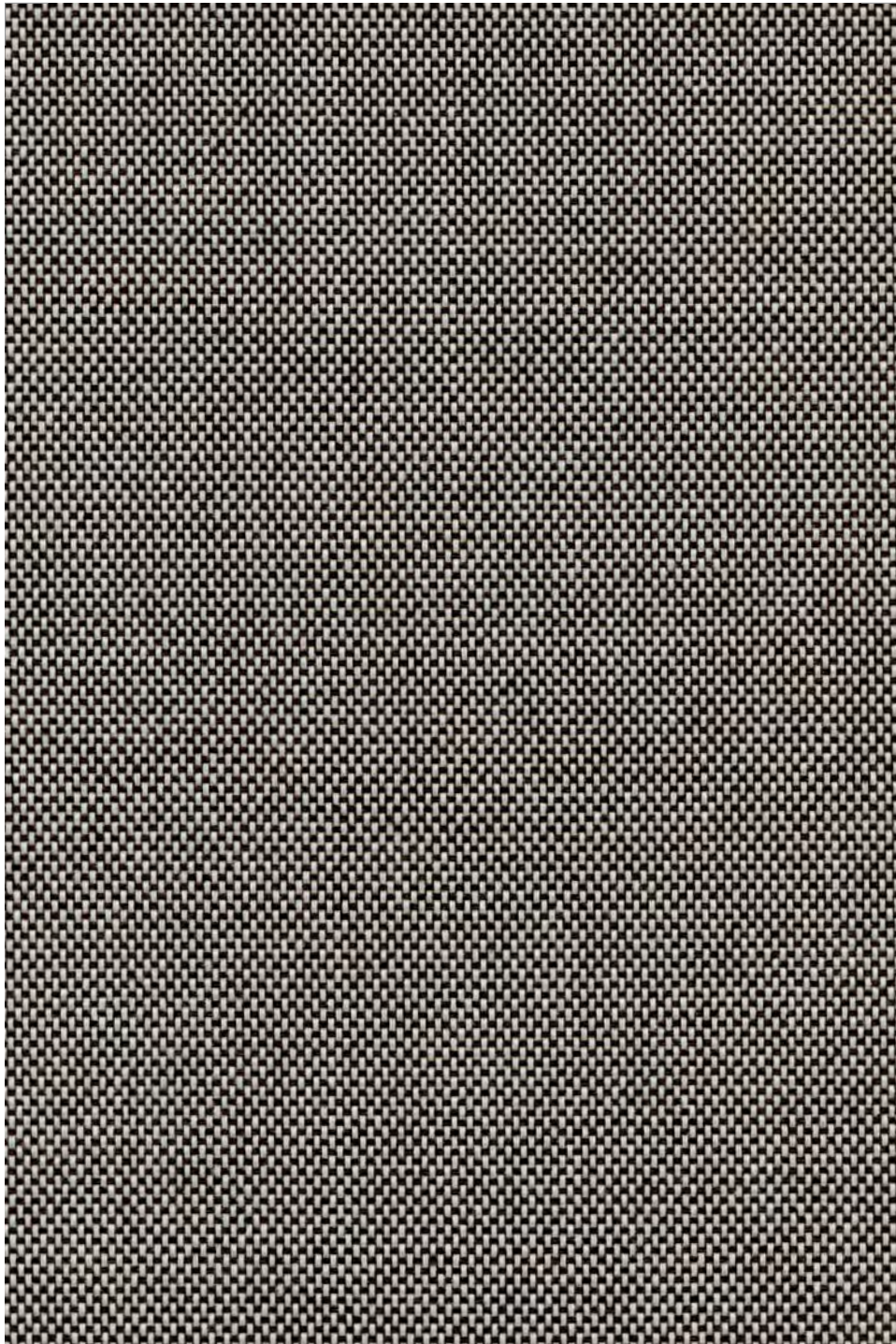
**Screen  
Collection**



PRINTABLE

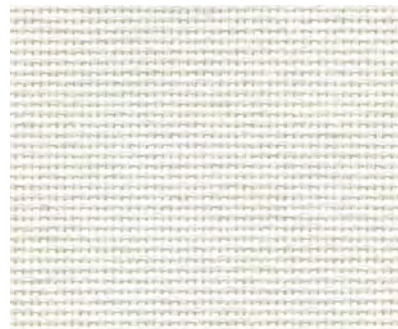


Ed. 02/2023



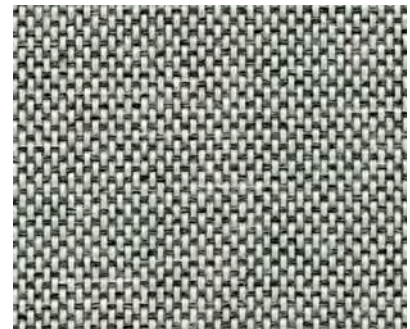
0107

Specifiche di prodotto	Product specification	Produktleistungen	
Composizione	Fabric description	Materialbeschreibung	100% poliestere riciclato 100% recycled polyester 100% Recycltes Polyester
Peso totale	Total weight	Gesamtgewicht	210 ± 10 (g/m <sup>2</sup> )
Spessore	Thickness	Stoffdicke	0,50 ± 0,05 (mm)
Comportamento alla fiamma	Flame resistance	Flammhemmung	Ignifugo Flame retardant Schwer entflammbar
Manutenzione	Maintenance	Pflege - und Reinigungshinweise	Pulire con panno umido Cleaning with a damp cloth Bedingt feucht abwischbar



0101

Tv 31 Ts 34 Rs 56 As 10  
T uv 9



0105

Tv 16 Ts 17 Rs 30 As 53  
T uv 8



0107

Tv 15 Ts 17 Rs 28 As 55  
T uv 8



5901

Tv 10 Ts 11 Rs 18 As 72



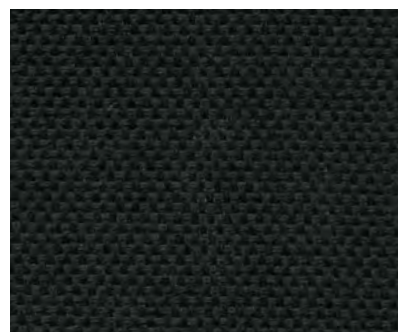
5905

Tv 5 Ts 5 Rs 6 As 89  
T uv 5



5951

Tv 5 Ts 6 Rs 5 As 89  
T uv 5



5959

Tv 5 Ts 5 Rs 3 As 92  
T uv 5



5907

Tv 7 Ts 7 Rs 5 As 88  
T uv 6



# Risparmio di acqua

Water saving  
Wassereinsparung



# Risparmio di energia

Energy saving  
Energieeinsparung



# Riduzione emissioni CO<sub>2</sub>

Lower CO<sub>2</sub> emission  
geringerer CO<sub>2</sub>-Ausstoß



Classe assorbimento acustico  
Acoustic absorption class  
Schallabsorptionsklasse

**E**  
NORMA ISO 354:2003 + NORMA ISO 11654:1998

Coefficiente di assorbimento acustico  
Acoustic absorption coefficient  
Schallabsorptionskoeffizient

**α<sub>w</sub> = 0,20**  
NORMA ISO 354:2003 + NORMA ISO 11654:1998

Campione in configurazione «G-100»  
Configuration samples «G-100»  
Prüfling in Konfiguration «G-100»

Dati tecnici	Technical details	Technisches Datenblatt	Standard	
OF Fattore di apertura	Openness factor	Öffnungsfaktor	ASHRAE Standard74-1988	3 (%)
Struttura tessuto	Fabric structure	Gewebebindung	Metodo interno Internal method Interne Prüfmethode	Panama - 18 x 16
Solidità alla luce	Light fastness	Lichtechtheit	ISO 105 B02	≥ 5
Stabilità dimensionale (6h, 80°C)	Dimensional stability (6h, 80°C)	Maßbeständigkeit (6h, 80°C)	Metodo interno Internal method Interne Prüfmethode	≤ 1,0 ordito e trama (%) ≤ 1,0 warp and weft (%) ≤ 1,0 Kette und Schuß (%)
Resistenza alla rottura	Tensile strenght	Reissfestigkeit	UNI EN ISO 1421:2000	trama (weft, Schuß): 300 ± 100 (N) ordito (warp, Kette): 480 ± 160 (N)
Allungamento alla rottura	Elongation at break	Bruchdehnung	UNI EN ISO 1421:2000	trama (weft, Schuß): 28.6 ± 2 (%) ordito (warp, Kette): 26.8 ± 3 (%)
Resistenza alla lacerazione	Tearing strenght	Weiterreissfestigkeit	UNI EN ISO 4674-1:2003	trama (weft, Schuß): 132 ± 11 (N) ordito (warp, Kette): 121 ± 3 (N)

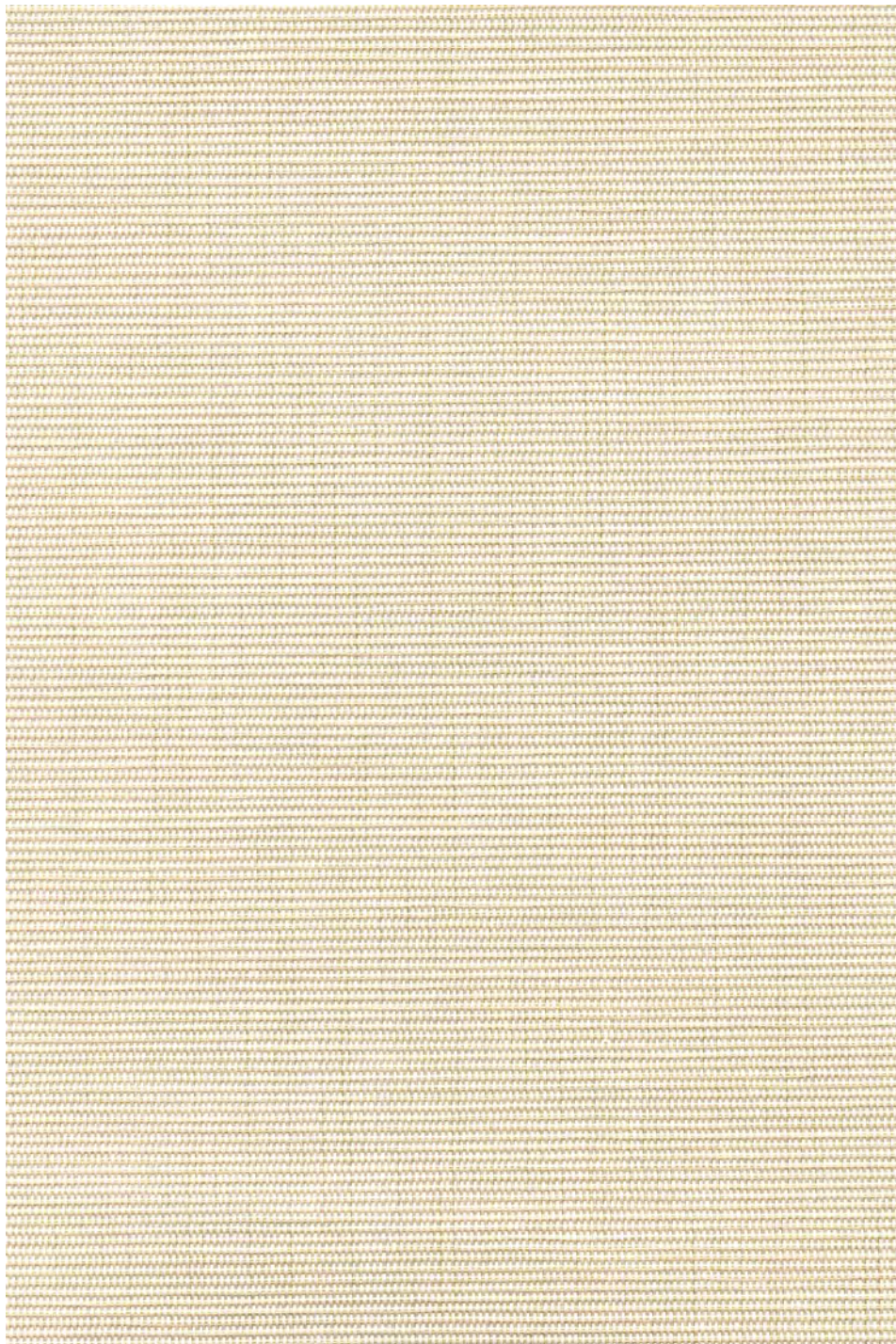
I valori sopra indicati sono calcolati secondo le normative riportate nella scheda tecnica  
Above mentioned values are calculated according to the corresponding specifications in Technical data sheets  
Die oben genannten Werte werden gemäß den entsprechenden Angaben in den technischen Datenblättern berechnet

# TexFive



ENERGY SAVING

OF 5%



0102



TENDITALIA  
*i feel at home*



## Architectural fabrics

### Screen Collection



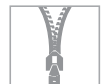
INDOOR



PRINTABLE



ZIP

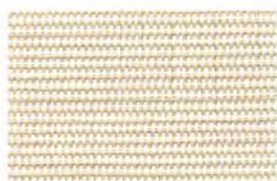


Specifiche di prodotto	Product specification	Produktleistungen	
Composizione	Fabric description	Materialbeschreibung	30% poliestere - 70% PVC 30% polyester - 70% PVC 30% Polyester - 70% PVC
Peso totale	Total weight	Gesamtgewicht	410 ± 20 (g/m <sup>2</sup> )
Spessore	Thickness	Stoffdicke	0,65 ± 0,05 (mm)
Comportamento alla fiamma	Flame resistance	Flammhemmung	Ignifugo Flame retardant Schwer entflammbar
Manutenzione	Maintenance	Pflege - und Reinigungshinweise	Pulire con acqua e sapone Cleaning with water and soap Mit Wasser und geeignetem Reiniger abwaschbar



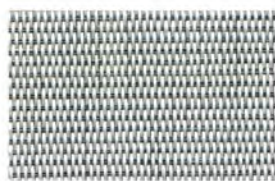
0100

Tv 25 Ts 27 Rs 63 As 10  
T uv 6 G tot 0,25 Fc 0,79



0101

Tv 21 Ts 24 Rs 59 As 17  
T uv 6 G tot 0,26 Fc 0,81



0102

Tv 14 Ts 15 Rs 39 As 46  
T uv 6 G tot 0,27 Fc 0,86



0151

Tv 9 Ts 9 Rs 5 As 85  
T uv 9 G tot 0,30 Fc 0,95

5951

Dati tecnici	Technical details	Technisches Datenblatt	Standard
OF Fattore di apertura	Openness factor	Öffnungsfaktor	ASHRAE Standard74-1988 5%
Struttura tessuto	Fabric structure	Gewebebindung	Metodo interno Internal method Interne Prüfmethode 21 x 14
Solidità alla luce	Light fastness	Lichtechtheit	ISO 105 B02 ≥ 6
Stabilità dimensionale (6h, 80°C)	Dimensional stability (6h, 80°C)	Maßbeständigkeit (6h, 80°C)	Metodo interno Internal method Interne Prüfmethode ≤ 1,0 ordito e trama (%) ≤ 1,0 warp and weft (%) ≤ 1,0 Kette und Schuss (%)
Resistenza alla rottura	Tensile strenght	Reissfestigkeit	UNI EN ISO 1421:2000 ordito (warp, Kette): 1625 ± 34 (N) trama (weft, Schuss): 1229 ± 107 (N)
Allungamento alla rottura	Elongation at break	Bruchdehnung	UNI EN ISO 1421:2000 ordito (warp, Kette): 17,0 ± 2,0 (%) trama (weft, Schuss): 10,0 ± 2,0 (%)
Resistenza alla lacerazione	Tearing strenght	Weiterreissfestigkeit	UNI EN ISO 4674-1:2003 ordito (warp, Kette): 73 ± 1,0 (N) trama (weft, Schuss): 75 ± 10,0 (N)

I valori sopra indicati sono calcolati secondo le normative riportate nella scheda tecnica  
Above mentioned values are calculated according to the corresponding specifications in Technical data sheets  
Die oben genannten Werte werden gemäß den entsprechenden Angaben in den technischen Datenblättern berechnet

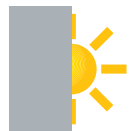


5951



## Architectural fabrics

### Screen Collection



INDOOR



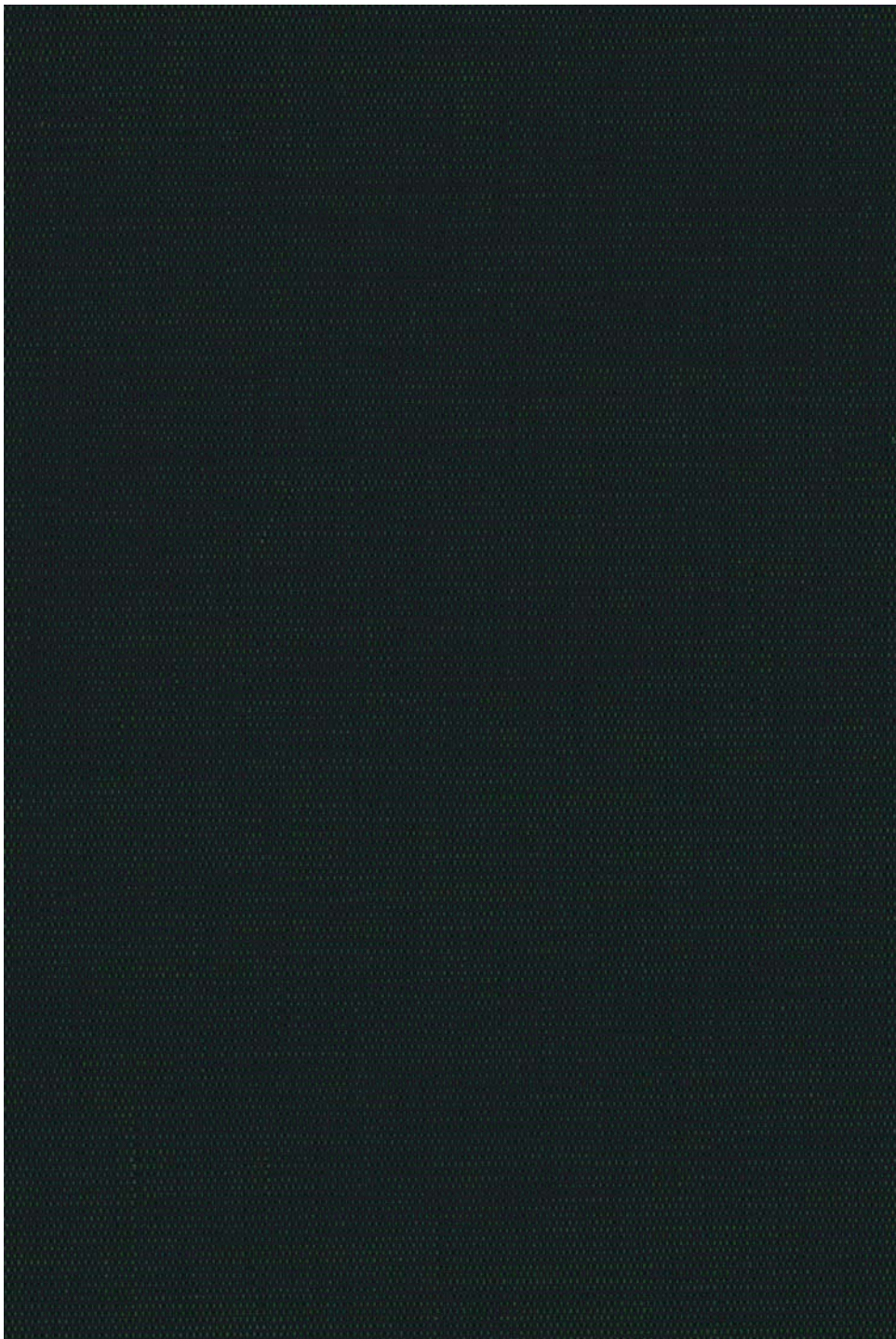
PRINTABLE



ZIP



Ed. 03/2021



Specifiche di prodotto	Product specification	Produktleistungen	
Composizione	Fabric description	Materialbeschreibung	30% poliestere - 70% PVC 30% polyester - 70% PVC 30% Polyester - 70% PVC
Peso totale	Total weight	Gesamtgewicht	450 ± 20 (g/m <sup>2</sup> )
Spessore	Thickness	Stoffdicke	0,65 ± 0,05 (mm)
Comportamento alla fiamma	Flame resistance	Flammhemmung	Ignifugo Flame retardant Schwer entflammbar
Manutenzione	Maintenance	Pflege - und Reinigungshinweise	Pulire con acqua e sapone Cleaning with water and soap Mit Wasser und geeignetem Reiniger abwaschbar



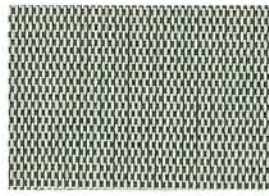
0101

Tv 26 Ts 27 Rs 62 As 11  
T uv 2,5 G tot 0,39 Fc 0,80



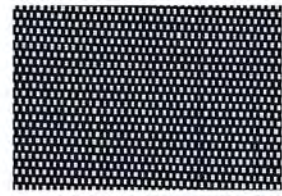
0105

Tv 11 Ts 14 Rs 50 As 36  
T uv 2,2 G tot 0,44 Fc 0,82



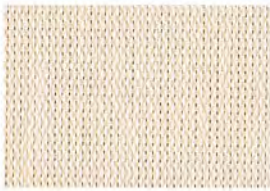
0151

Tv 9 Ts 10 Rs 37 As 53  
T uv 3,2 G tot 0,49 Fc 0,85



5901

Tv 2 Ts 2 Rs 13 As 85  
T uv 1,0 G tot 0,59 Fc 0,91



0102

Tv 20 Ts 23 Rs 59 As 18  
T uv 2,6 G tot 0,40 Fc 0,80



5907

Tv 2 Ts 2 Rs 6 As 92  
T uv 1,6 G tot 0,62 Fc 0,93



5951

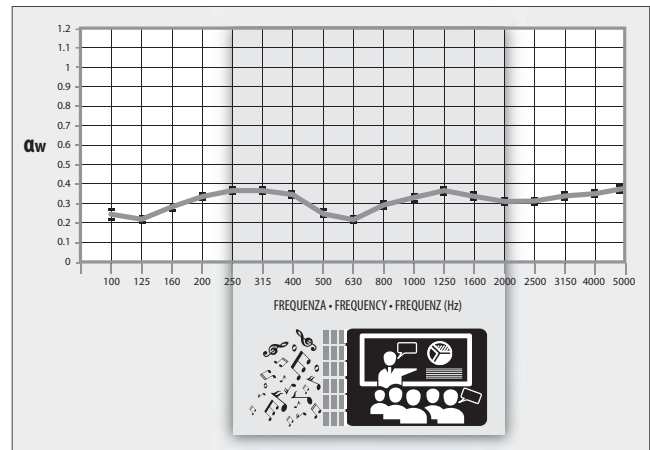
Tv 4 Ts 4 Rs 7 As 89  
T uv 4,0 G tot 0,61 Fc 0,93



5959

Tv 4 Ts 4 Rs 4 As 92  
T uv 3,4 G tot 0,62 Fc 0,93

ASSORBIMENTO ACUSTICO - ACOUSTIC ABSORPTION - SCHALLABSORPTIONSFÄHIGKEIT



Classe assorbimento acustico  
Acoustic absorption class  
Schallabsorptionsklasse

**D**  
NORMA ISO 354:2003 + NORMA ISO 11654:1998

Coefficiente di assorbimento acustico  
Acoustic absorption coefficient  
Schallabsorptionskoeffizient

**$\alpha_w = 0,35$**   
NORMA ISO 354:2003 + NORMA ISO 11654:1998

Campione in configurazione «G-300»  
Configuration samples «G-300»  
Prüfling in Konfiguration «G-300»

Dati tecnici	Technical details	Technisches Datenblatt	Standard
OF Fattore di apertura	Openness factor	Öffnungsfaktor	ASHRAE Standard74-1988 3%
Struttura tessuto	Fabric structure	Gewebebindung	Metodo interno Internal method Interne Prüfmethode 21 x 18
Solidità alla luce	Light fastness	Lichtechtheit	ISO 105 B02 $\geq 6$
Stabilità dimensionale (6h, 80°C)	Dimensional stability (6h, 80°C)	Maßbeständigkeit (6h, 80°C)	Metodo interno Internal method Interne Prüfmethode $\leq 1,0$ ordito e trama (%) $\leq 1,0$ warp and weft (%) $\leq 1,0$ Kette und Schuss (%)
Resistenza alla rottura	Tensile strenght	Reissfestigkeit	UNI EN ISO 1421:2000 ordito (warp, Kette): 1400 $\pm$ 150 (N) trama (weft, Schuss): 1400 $\pm$ 80 (N)
Allungamento alla rottura	Elongation at break	Bruchdehnung	UNI EN ISO 1421:2000 ordito (warp, Kette): 10,0 $\pm$ 3,0 (%) trama (weft, Schuss): 10,0 $\pm$ 3,0 (%)
Resistenza alla lacerazione	Tearing strenght	Weiterreissfestigkeit	UNI EN ISO 4674-1:2003 ordito (warp, Kette): 38 $\pm$ 5 (N) trama (weft, Schuss): 45 $\pm$ 5 (N)

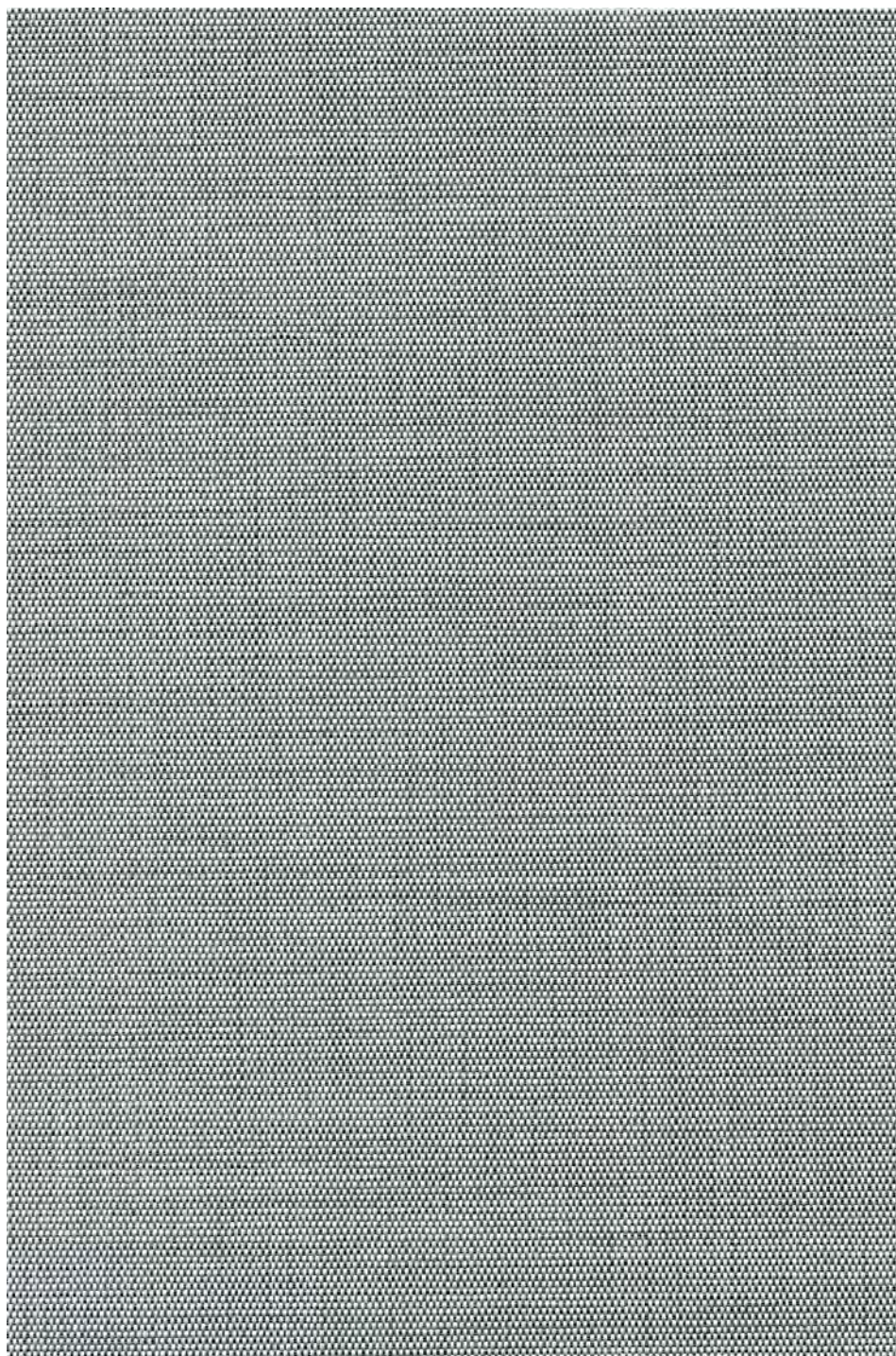
I valori sopra indicati sono calcolati secondo le normative riportate nella scheda tecnica  
Above mentioned values are calculated according to the corresponding specifications in Technical data sheets  
Die oben genannten Werte werden gemäß den entsprechenden Angaben in den technischen Datenblättern berechnet

# TexOne



ENERGY SAVING

OF 1%



0151



## Architectural fabrics

### Screen Collection



INDOOR



PRINTABLE



ZIP



Specifiche di prodotto	Product specification	Produktleistungen	
Composizione	Fabric description	Materialbeschreibung	30% poliestere - 70% PVC 30% polyester - 70% PVC 30% Polyester - 70% PVC
Peso totale	Total weight	Gesamtgewicht	500 ± 20 (g/m <sup>2</sup> )
Spessore	Thickness	Stoffdicke	0,65 ± 0,05 (mm)
Comportamento alla fiamma	Flame resistance	Flammhemmung	Ignifugo Flame retardant Schwer entflammbar
Manutenzione	Maintenance	Pflege - und Reinigungshinweise	Pulire con acqua e sapone Cleaning with water and soap Mit Wasser und geeignetem Reiniger abwaschbar



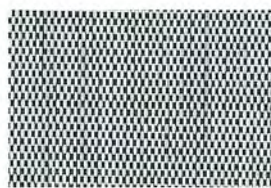
0101

Tv 14 Ts 17 Rs 67 As 16  
T uv 0,1 G tot 0,35 Fc 0,60



0102

Tv 10 Ts 15 Rs 60 As 25  
T uv 1,3 G tot 0,37 Fc 0,63



0151

Tv 3,2 Ts 3 Rs 37 As 60  
T uv 1,1 G tot 0,45 Fc 0,76



5951

Tv 0,1 Ts 0 Rs 6 As 94  
T uv 0 G tot 0,55 Fc 0,93

Dati tecnici	Technical details	Technisches Datenblatt	Standard
OF Fattore di apertura	Openness factor	Öffnungsfaktor	ASHRAE Standard74-1988 1%
Struttura tessuto	Fabric structure	Gewebebindung	Metodo interno Internal method Interne Prüfmethode 22 x 21
Solidità alla luce	Light fastness	Lichtechtheit	ISO 105 B02 ≥ 6
Stabilità dimensionale (6h, 80°C)	Dimensional stability (6h, 80°C)	Maßbeständigkeit (6h, 80°C)	Metodo interno Internal method Interne Prüfmethode ≤ 1,0 ordito e trama (%) ≤ 1,0 warp and weft (%) ≤ 1,0 Kette und Schuss (%)
Resistenza alla rottura	Tensile strenght	Reissfestigkeit	UNI EN ISO 1421:2000 ordito (warp, Kette): 1400 ± 70 (N) trama (weft, Schuss): 1530 ± 200 (N)
Allungamento alla rottura	Elongation at break	Bruchdehnung	UNI EN ISO 1421:2000 ordito (warp, Kette): 22,0 ± 0,5 (%) trama (weft, Schuss): 11,0 ± 2,0 (%)
Resistenza alla lacerazione	Tearing strenght	Weiterreissfestigkeit	UNI EN ISO 4674-1:2003 ordito (warp, Kette): 41 ± 2 (N) trama (weft, Schuss): 50 ± 1 (N)

I valori sopra indicati sono calcolati secondo le normative riportate nella scheda tecnica  
Above mentioned values are calculated according to the corresponding specifications in Technical data sheets  
Die oben genannten Werte werden gemäß den entsprechenden Angaben in den technischen Datenblättern berechnet