

TENDITALIA

I feel at home



Ed. 5 – 18/07/2023

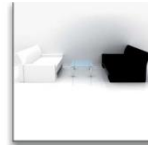
Gea
Visual comfort



2000 mm ca. ←→



Visual comfort



Hi tech



Trend & design



Architectural fabrics

001



013



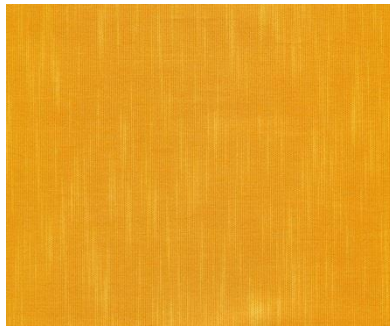
003



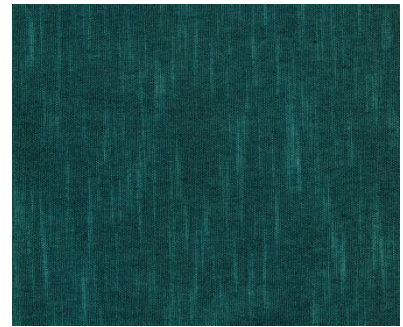
073



151



062



061



053



115



Dati tecnici	Technical details	Technisches Datenblatt	Standard
Altezza tessuto	Fabric height	Breite	2000 mm
Composizione	Fabric description	Materialbeschreibung	56% Poliestere riciclato- 44 % Poliestere 56% Recycled Polyester- 44% Polyester 56% Recycletes Polyester- 44%Polyester
Resinatura	Coating	Beschichtung	100% Copolimeri acrilici e derivati Acrylic copolymer and derivatives Polymeracrylate + Derivate
Peso tessuto	Fabric weight	Gewebegewicht	140±5 (g/m ²)
Peso rivestimento	Coating weight	Beschichtungsgewicht	10±5 (g/m ²)
Peso totale	Total weight	Gesamtgewicht	150±10 (g/m ²)
Spessore	Thickness	Stoffdicke	0.35±0.05 mm
Comportamento alla fiamma	Flame resistance	Flammhemmung	Non ignifugo Flammable Entflammbar
Stabilità dimensionale (6h, 80°C)	Dimensional stability	Maßbeständigkeit	Trama (Weft, Schuß) <1 (%) Ordito (Warp- Kette) <1 (%)
Manutenzione	Maintenance	Pflege- und Reinigungshinweise	Pulire con panno umido Cleanig with a damp cloth Bedingt feucht abwischbar
Prodotto privo di formaldeide	Formaldehyde Free	Ohne Formaldehyde	No No Nein
Esente da PVC e alogeni	PVC and halogen Free	PVC – und halogenfrei	Si Yes Ja
Protezione da muffe e batteri (trattamento hygienguard)	Guarantees product resistance to attacks and insurgence of bacteria and moulds	Optimaler Schutz in Feuchträumen – fungizid und bakteristatisch	No No Nein
Poliestere riciclato	Recycling Polyester	Recycletes Polyester	Si Yes Ja
Valori energetici	Energetic value	Energetische Werte	Standard
Stabilità alla luce	Light fastness	Lichtechtheit	≥ 5 (DIN EN ISO 105 B02)

G-tot*

(EN 14501)

Color	001	013	003	073	151	062	061	053	115
G-tot* ± 0.01	0.44	0.45	0.49	0.50	0.45	0.50	0.48	0.48	0.48

* valore "g tot" calcolato considerando doppio vetro basso emissivo, spazio riempito con Argon (U: 1.2 W/m²K e g: 0.59 e tende chiuse

**g tot" value calculated considering Double-glazing, low emissivity coating, space filled with Argon, Glass Type C (U: 1.2 W/m²K and g: 0.59) and closed curtains

*Wert "g tot" berechnet Doppelverglasung mit thermoreflektierender Beschichtung, Zwischernraum mit Argon gefüllt (U: 1,2 W/m² K und g 0,59) bei geschlossenem Lamellenvorhang

Comportamento alla luce
(EN 410)

Behaviour to the light

Lichtreflektion

Color	± 2%	001	013	003	073	151	062	061	053	115
<i>Riflessione luce / light reflection / Reflektion</i>		33	30	27	2	28	8	14	15	8
<i>Trasmissione / light transmission / Transmission</i>		59	57	22	10	33	13	27	23	38
<i>Assorbimento / light absorption / Absorption</i>		3	13	51	88	39	79	59	62	54

Classificazione di schermatura
(EN 14501)

Performance classes

Leistungsklasse

	001	013	003	073	151	062	061	053	115
<i>Controllo del bagliore/Glare controle/Blendschutz</i>	0	0	0	0	0	0	0	0	0
<i>Privacy notturna/Night privacy/Sichtschutz bei Nacht</i>	0	0	0	0	0	0	0	0	0
<i>Contatto visivo con l'esterno/ Visual contact with outside/Durchsicht</i>	4	4	4	4	4	4	4	4	4
<i>Utilizzazione luce diurna/ Daylight utilisation/Tageslichtnutzung</i>	4	4	3	2	4	1	3	2	2
<i>Trasmissione energetica/ Heat protection/ sommerlicher Wärmeschutz**</i>	1	1	1	0	1	0	1	1	1

** vetro C (iso 14501) U= 1,2 g= 0,59

** glass C (iso 14501) U=1,2 g=0,59

** verglasung C (iso 14501) U=1,2 g=0,59

Per la classificazione completa secondo la norma EN 14501, vai al sito: www.tenditalia14501.com
Please click here for a complete classification according to Norm EN14501: www.tenditalia14501.com
Für die Klassifikation nach EN 14501 klicken Sie bitte hier : www.tenditalia14501.com