

TENDITALIA  
*I feel at home*



Ed. 8 – 20/06/2023

# Euro Blackout Trend

Trend & design

ENERGY SAVING

2100 mm ca. ↔



Visual comfort



Hi tech



Trend & design



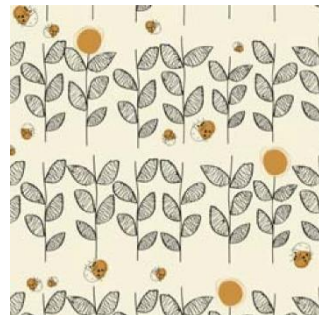
Architectural fabrics



100



400



NPT0141



NPT0149



200



500



NPT0205



NPT0131



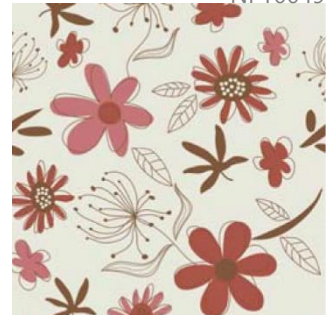
300



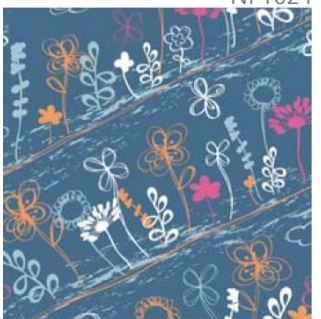
600



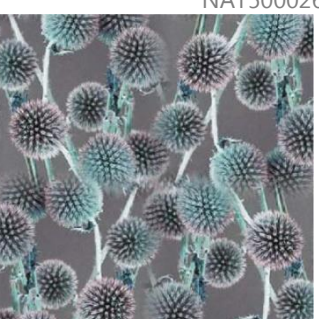
NPT100020



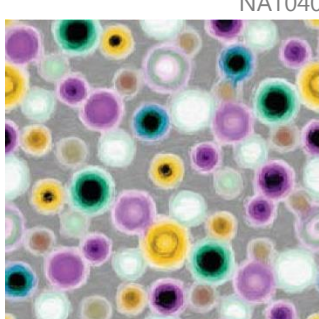
NPT0049



NPT024



NAT500026



NAT0406

Dati tecnici	Technical details	Technisches Datenblatt	Standard
Altezza tessuto	Fabric height	Breite	2100 mm
Composizione	Fabric description	Materialbeschreibung	100% Poliestere 100% Polyester 100% Polyester
Resinatura	Coating	Beschichtung	100% Copolimeri acrilici e derivati Acrylic copolymer and derivatives Polymeracrylate + Derivate
Peso tessuto	Fabric weight	Gewebegewicht	80±5 (g/m <sup>2</sup> )
Peso rivestimento	Coating weight	Beschichtungsgewicht	50±5 (g/m <sup>2</sup> )
Peso totale	Total weight	Gesamtgewicht	210±10 (g/m <sup>2</sup> )
Spessore	Thickness	Stoffdicke	0.34±0.02 mm
Comportamento alla fiamma	Flame resistance	Flammhemmung	Non ignifugo Flammable Entflammbar
Comportamento da appeso (verticali)	Hanging behaviour (vertical) (MA2)** (MA6)**	Hängeverhalten (Vertical Lamellen)	(°) < 10 (mm) < 5
Comportamento da appeso (rullo)	Hanging behaviour (roller) (MA34)**	Hängeverhalten (Rollos)	(%) < 1.5
Stabilità dimensionale (6h, 80°C)	Dimensional stability	Maßbeständigkeit	Trama (Weft, Schuß) <1 (%) Ordito (Warp- Kette) <1 (%)
Manutenzione	Maintenance	Pflege- und Reinigungshinweise	Pulire con panno umido Cleaning with a damp cloth Bedingt feucht abwischbar
Prodotto privo di formaldeide	Formaldehyde Free	Ohne Formaldehide	Si Yes Ja
Esente da PVC e alogeni	PVC and halogen Free	PVC – und halogenfrei	Si Yes Ja
Idoneo per abbaino	Suitable for Dormer window	Geignet für Dachfenster	Si Yes Ja
Corretta illuminazione nei posti di lavoro	Guarantees proper lighting of the work environment	Korrekte Beleuchtung im Arbeitsumfeld	Si Yes Ja
Protezione da muffe e batteri (trattamento hygienguard)	Guarantees product resistance to attacks and insurgence of bacteria and moulds	Optimaler Schutz in Feuchträumen – fungizid und bakteristatisch	No No Nein
<b>Valori energetici</b>	<b>Energetic value</b>	<b>Energetische Werte</b>	<b>Standard</b>
Stabilità alla luce	Light fastness	Lichtechtheit	≥ 5 (DIN EN ISO 105 B02)



## G-tot\* (EN 14501)

Color ± 0.01

Tutti i colori – All the colors – Alle farben

0,27

## Comportamento alla luce

(EN 410) (380-780nm campo luce visibile)

## Behaviour to the light

## Lichtreflektion

Color ± 2%

Tutti i colori – All the colors – Alle farben

Riflessione luce / light reflection / Reflektion

86.0

Trasmissione / light transmission / Transmission

0.0

Assorbimento / light absorption / Absorption

14.0

## Comportamento al calore

(EN 410) (380-2500nm) (%)

## Behaviour to the heat

## Wärmereflektion

Color ± 2%

Tutti i colori – All the colors – Alle farben

Riflessione calore / heat reflection / Reflektion

84.0

Trasmissione / heat transmission / Transmission

0.0

Assorbimento / heat absorption / Absorption

16.0

## Riflessione della luce interna

(EN 410)

## Internal light reflection

## Lichtreflektion der Innenseite

Color ± 2%

Tutti i colori – All the colors – Alle farben

-

## Trasmissione UV

(EN 410)

## UV transmission

## UV Transmission

Color ± 2%

Tutti i colori – All the colors – Alle farben

0,0

\* valore "g tot" calcolato secondo norma EN 13363-1 (ottobre 2003) considerando: doppio vetro con copertura termoprotettiva( U: 1.6 W/m2K e g: 0.70) e tende chiuse

\*\* MA: metodo di analisi interno Tenditalia

\*\*"g tot" value calculated according to regulation EN 13363-1 (October 2003) considering: Double-glazed glass pane with thermoprotective cover (U: 1.6 W/m2K and g: 0.70) and closed curtains

\*\*MA: TENDITALIA'S internal method analysis

\*Wert "g tot" berechnet nach EN 13363-1 (Oktober 2003) unter folgender Annahme: Doppelverglasung mit thermoreflektierender Beschichtung (U: 1,6 W/m2 K und g=0,70) bei geschlossenem Lamellenvorhang

\*\*MA: Tenditalia interne Prüfmethode

## Classificazione di schermatura

## Performance classes

## Leistungsklasse

(EN 14501)

Tutti i colori – All the colors – Alle farben

*Controllo del bagliore/Glare controle/Blendschutz*

4

*Privacy notturna/Night privacy/Sichtschutz bei Nacht*

4

*Contatto visivo con l'esterno/  
Visual contact with outside/Durchsicht*

0

*Utilizzazione luce diurna/  
Daylight utilisation/Tageslichtnutzung*

0

*Trasmissione energetica/Heat protection/  
sommerlicher Wärmeschutz\*\*\**

2

\*\*\* vetro C (iso 14501) U= 1,2 g= 0,59

\*\*\*glass C (iso 14501) U=1,2 g=0,59

\*\*\*verglasung C (iso 14501) U=1,2 g=0,59

**Per la classificazione completa secondo la norma EN 14501, vai al sito: [www.tenditalia14501.com](http://www.tenditalia14501.com)**  
**Please click here for a complete classification according to Norm EN14501: [www.tenditalia14501.com](http://www.tenditalia14501.com)**  
**Für die Klassifikation nach EN 14501 klicken Sie bitte hier : [www.tenditalia14501.com](http://www.tenditalia14501.com)**

