

TENDITALIA  
*i feel at home*




Ed. 10 – 21/06/2023

# Patagonia Fr

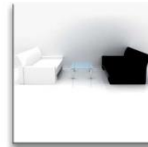
Visual comfort



2000 mm ca. 



Visual comfort



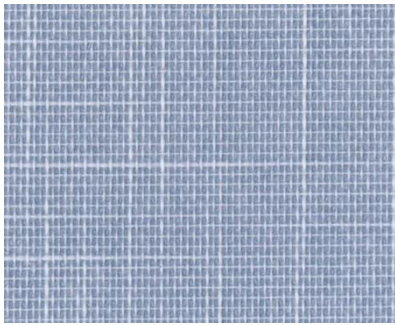
Hi tech



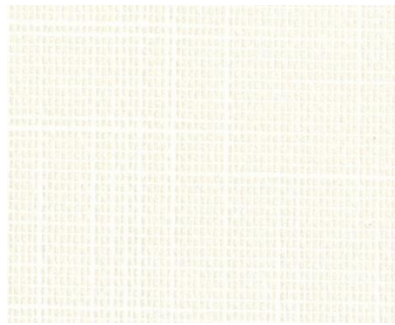
Trend & design



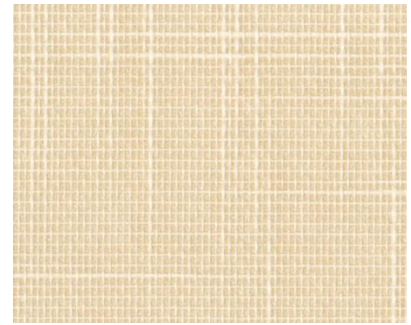
Architectural fabrics



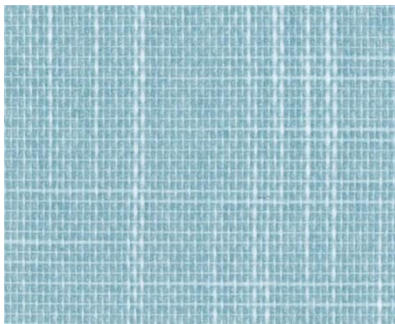
011



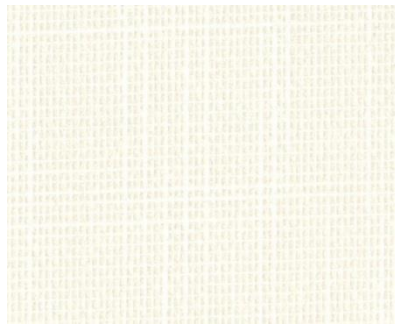
000



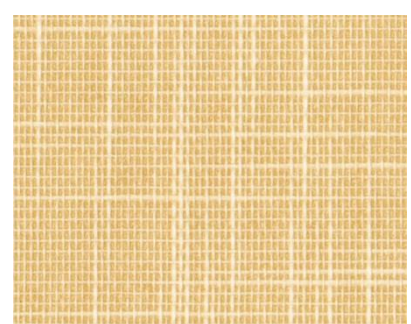
021



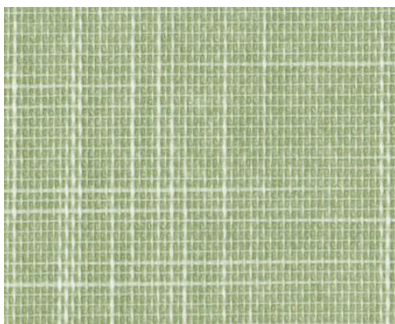
112



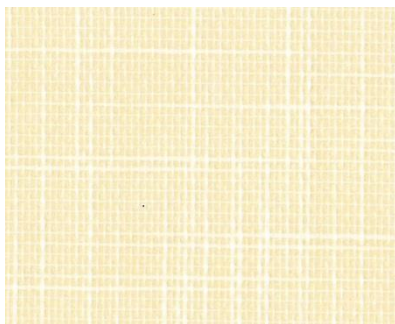
001



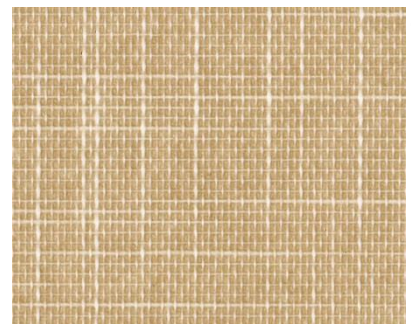
023



006



025




031

# Patagonia Fr

Visual comfort



2000 mm ca. 



Visual comfort



Hi tech

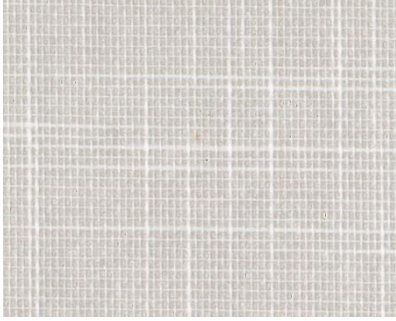


Trend & design

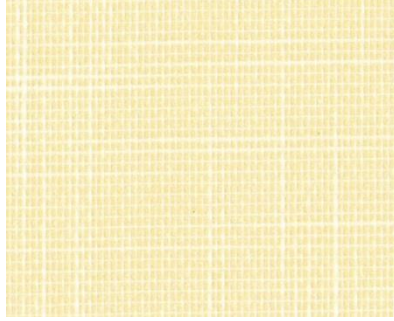


Architectural fabrics

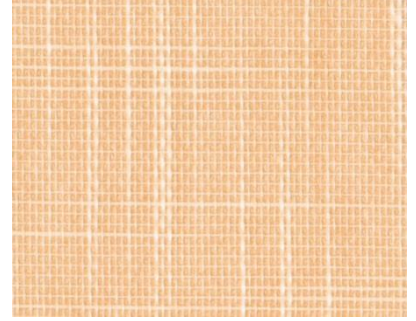
052



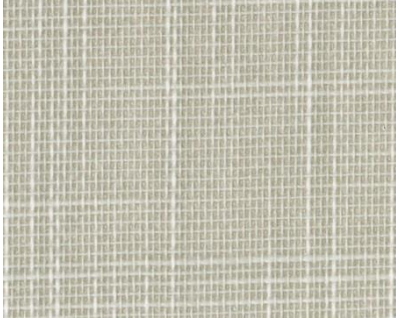
022



012



053





Dati tecnici	Technical details	Technisches Datenblatt	Standard
Altezza tessuto	Fabric height	Breite	2000 mm
Composizione	Fabric description	Materialbeschreibung	100% Poliestere 100% Polyester 100% Polyester
Resinatura	Coating	Beschichtung	100% Copolimeri acrilici e derivati Acrylic copolymer and derivatives Polymeracrylate + Derivate
Peso tessuto	Fabric weight	Gewebegewicht	110±5 (g/m <sup>2</sup> )
Peso rivestimento	Coating weight	Beschichtungsgewicht	125±5 (g/m <sup>2</sup> )
Peso totale	Total weight	Gesamtgewicht	235±10 (g/m <sup>2</sup> )
Spessore	Thickness	Stoffdicke	0.40±0.05 mm
Comportamento alla fiamma	Flame resistance	Flammhemmung	DM 26/06/84: Classe1 DIN 4102: B1
Comportamento da appeso (verticali)	Hanging behaviour (vertical) (MA2)** (MA6)**	Hängeverhalten (Vertical Lamellen)	(°) < 10 (mm) < 10
Comportamento da appeso (rullo)	Hanging behaviour (roller) (MA34)**	Hängeverhalten (Rollos)	(%) < 2.0
Stabilità dimensionale (6h, 80°C)	Dimensional stability	Maßbeständigkeit	Trama (Weft, Schuß) <1 (%) Ordito (Warp- Kette) <1 (%)
Manutenzione	Maintenance	Pflege- und Reinigungshinweise	Pulire con panno umido Cleaning with a damp cloth Bedingt feucht abwischbar
Prodotto privo di formaldeide	Formaldehyde Free	Ohne Formaldehyde	Si Yes Ja
Esente da PVC e alogeni	PVC and halogen Free	PVC – und halogenfrei	No No Nein
Protezione da muffe e batteri (trattamento hygienguard)	Guarantees product resistance to attacks and insurgence of bacteria and moulds	Optimaler Schutz in Feuchträumen – fungizid und bakteristatisch	Si Yes Ja

## G-tot\* (EN 14501)

Color	021	012	023	025	022	001	000	052	053	031	112	011	006
G-tot ± 0.01	0.51	0.51	0.51	0.51	0.51	0.46	0.46	0.51	0.51	0.51	0.51	0.51	0.51

\* valore "g tot" calcolato secondo norma EN 13363 - 1 (13/03/2008) considerando: doppio vetro tipo C (EN 14501) con copertura termoprotettiva e spazio riempito con Argon (U: 1.2 W/m<sup>2</sup>K e g: 0.59) e tende chiuse

\*\* MA: metodo di analisi interno Tenditalia

\* g value calculated according to regulation EN 13363-1 (13/03/2008). Double glazing, with a low emissivity coating, space filled with argon (U: 1.2 W/m<sup>2</sup>K; g 0.59) curtains closed

\*\*MA: TENDITALIA'S internal method analysis

\*Wert "g tot" berechnet nach EN 13363-1 (13/03/2008) unter folgender Annahme: Doppelverglasung mit thermoreflektierender Beschichtung "Zwischenraum mit Argon gefüllt" (U: 1,2 W/m<sup>2</sup> K und g=0,59) bei geschlossenem Lamellenvorhang

\*\*MA: Tenditalia interne Prüfmethode

## Stabilità alla luce (DIN EN ISO 105 B02)

## Light fastness

## Lichteinheit

Color	≥	021	012	023	022	001	000	052	053	112	011	006
		7	7	7	7	7	4	7	7	7	7	7

## Comportamento alla luce

## Behaviour to the light

## Lichtreflektion

(EN 410) (380-780nm campo luce visibile)

Color	± 2%	000	001	021	012	023	025	022	052	031	053	112	011	006
Riflessione luce / light reflection / Reflektion		40	48	33	28	35	37	37	25	24	20	21	18	27
Trasmissione / light transmission / Transmission		57	47	47	38	45	53	50	47	35	36	43	32	33
Assorbimento / light absorption / Absorption		3	5	20	34	20	10	13	28	41	44	36	50	40

## Comportamento al calore

## Behaviour to the heat

## Wärmereflektion

(EN 410) (380-2500nm) (%)

Color	± 2%	000	001	021	012	023	025	022	052	031	053	112	011	006
Riflessione calore / heat reflection / Reflektion		-	-	-	-	-	-	-	-	-	-	-	-	-
Trasmissione / heat transmission / Transmission		-	-	-	-	-	-	-	-	-	-	-	-	-
Assorbimento / heat absorption / Absorption		-	-	-	-	-	-	-	-	-	-	-	-	-

## Trasmissione UV

(EN 410)

## UV transmission

## UV Transmission

Color	± 2%	000	001	021	012	023	025	022	052	031	053	112	011	006
		-	-	-	-	-	-	-	-	-	-	-	-	-

## Riflessione della luce interna

(EN 410)

## Internal light reflection

## Lichtreflektion der Innenseite

Color	± 2%	000	001	021	012	023	025	022	052	031	053	112	011	006
		-	-	-	-	-	-	-	-	-	-	-	-	-

## Classificazione di schermatura

(EN 14501)

## Performance classes

## Leistungsklasse

	000	001	021	012	023	025	022	052	031	053	112	011	006
Controllo del bagliore/Glare controle/Blendschutz	0	0	1	1	1	1	1	1	1	1	1	1	1
Privacy notturna/Night privacy/Sichtschutz bei Nacht	0	0	1	1	1	1	1	1	1	1	1	1	1
Contatto visivo con l'esterno/ Visual contact with outside/Durchsicht	0	0	0	0	0	0	0	0	0	0	0	0	0
Utilizzazione luce diurna/ Daylight utilisation/Tageslichtnutzung	4	4	3	3	3	3	3	3	3	3	3	3	3
Trasmissione energetica/ Heat protection/ sommerlicher Wärmeschutz***	1	1	0	0	0	0	0	0	0	0	0	0	0

\*\*\* vetro C (iso 14501) U= 1,2 g= 0,59

\*\*\* glass C (iso 14501) U=1,2 g=0,59

\*\*\* verglasung C (iso 14501) U=1,2 g=0,59