

TENDITALIA
I feel at home

Ed. 11 – 21/06/2023

Patagonia



Visual comfort

2000 mm ca. \longleftrightarrow



Visual comfort



Hi tech

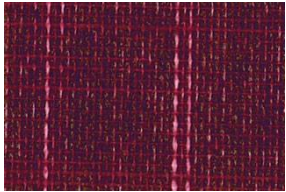


Trend & design

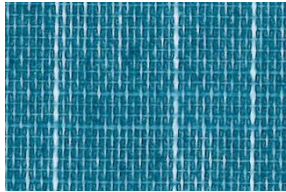


Architectural fabrics

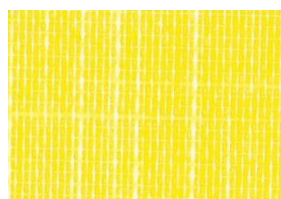
126



119



153



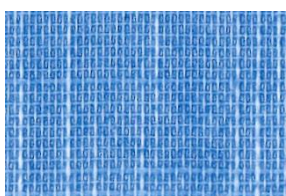
066



124



117



015



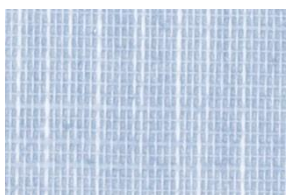
003



072



111



028



029



073



058



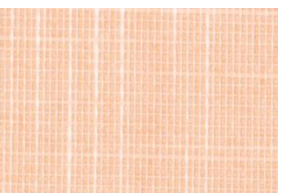
001



021



032



005



000



603



Dati tecnici	Technical details	Technisches Datenblatt	Standard
Altezza tessuto	Fabric height	Breite	2000 mm
Composizione	Fabric description	Materialbeschreibung	100% Poliestere 100% Polyester 100% Polyester
Resinatura	Coating	Beschichtung	100% Copolimeri acrilici e derivati Acrylic copolymer and derivatives Polymeracrylate + Derivate
Peso tessuto	Fabric weight	Gewebegewicht	110±5 (g/m ²)
Peso rivestimento	Coating weight	Beschichtungsgewicht	80 ±5 (g/m ²)
Peso totale	Total weight	Gesamtgewicht	190±10 (g/m ²)
Spessore	Thickness	Stoffdicke	0.40±0.05 mm
Comportamento alla fiamma	Flame resistance	Flammhemmung	Non ignifugo Flammable Einflammbar
Comportamento da appeso (verticali)	Hanging behaviour (vertical) (MA2)** (MA6)**	Hängeverhalten (Vertical Lamellen)	(°) < 10 (mm) < 5
Comportamento da appeso (rullo)	Hanging behaviour (roller) (MA34)**	Hängeverhalten (Rollos)	(%) < 2.0
Stabilità dimensionale (6h, 80°C)	Dimensional stability	Maßbeständigkeit	Trama (Weft, Schuß) <1 (%) Ordito (Warp- Kette) <1 (%)
Manutenzione	Maintenance	Pflege- und Reinigungshinweise	Pulire con panno umido Cleaning with a damp cloth Bedingt feucht abwischbar
Prodotto privo di formaldeide	Formaldehyde Free	Ohne Formaldehide	Si Yes Ja
Esente da PVC e alogeni	PVC and halogen Free	PVC – und halogenfrei	Si Yes Ja
Protezione da muffe e batteri (trattamento hygienguard)	Guarantees product resistance to attacks and insurgence of bacteria and moulds	Optimaler Schutz in Feuchträumen – fungizid und bakteristatisch	Si Yes Ja

G-tot* (EN 14501)

Color	058	005	028	153	066	001	111	117	119	126
G-tot ± 0.01	0.58	0.53	0.49	0.51	0.52	0.44	0.52	0.56	0.58	0.60
	0.21	0.03	0.15	0.72	1.24	0.73	0.32	0.29	0.00	0.63
	0.49	0.52	0.50	0.57	0.60	0.58	0.50	0.49	0.49	0.59

* valore "g tot" calcolato considerando: doppio vetro tipo C (EN 14501) con copertura termoprotettiva e spazio riempito con Argon (U: 1.2 W/m²K e g: 0.59) e tende chiuse

** MA: metodo di analisi interno Tenditalia

**g tot" value calculated considering double glazing, with a low emissivity coating, space filled with argon (U: 1.2 W/m²K; g 0.59) curtains closed

**MA: TENDITALIA'S internal method analysis

*Wert "g tot" berechnet Doppelverglasung mit thermoreflektierender Beschichtung "Zwischenraum mit Argon gefüllt" (U: 1,2 W/m² K und g=0,59) bei geschlossenem Lamellenvorhang

**MA: Tenditalia interne Prüfmethode

Stabilità alla luce

(DIN EN ISO 105 B02)

Color	≥	058	005	028	153	066	001	111	117	119	126
		6	6	6	6	6	6	6	6	6	6
Color	≥	021	003	015	072	124	073	032	029	000	603
		6	6	6	6	6	6	6	6	4	6

Comportamento alla luce

(EN 410) (380-780nm campo luce visibile)

Color	± 2%	058	005	028	153	066	001	111	117	119	126
<i>Riflessione luce / light reflection / Reflektion</i>		18	32	42	35	39	46	40	20	19	16
<i>Trasmissione / light transmission / Transmission</i>		12	24	28	25	23	49	24	20	15	1
<i>Assorbimento / light absorption / Absorption</i>		70	44	30	40	38	5	36	60	66	83
Color	± 2%	021	003	015	072	124	073	032	029	000	603
<i>Riflessione luce / light reflection / Reflektion</i>		40	36	42	20	24	30	40	42	48	20
<i>Trasmissione / light transmission / Transmission</i>		30	27	25	15	1	21	49	28	50	12
<i>Assorbimento / light absorption / Absorption</i>		30	37	33	65	75	49	11	30	2	68

Trasmissione UV

(EN 410)

Color	± 2%	058	005	028	153	066	001	111	117	119	126
		-	-	-	-	-	-	-	-	-	-
Color	± 2%	021	003	015	072	124	073	032	029	000	603
		-	-	-	-	-	-	-	-	-	-

Riflessione della luce interna

(EN 410)

Color	± 2%	058	005	028	153	066	001	111	117	119	126
		-	-	-	-	-	-	-	-	-	-
Color	± 2%	021	003	015	072	124	073	032	029	000	603
		-	-	-	-	-	-	-	-	-	-

Classificazione di schermatura

(EN 14501)

Performance classes

Leistungsklasse

	058	005	028	153	066	001	111	117	119	126
<i>Controllo del bagliore/Glare controle/Blendschutz</i>	2	1	0	1	1	0	1	1	2	2
<i>Privacy notturna/Night privacy/Sichtschutz bei Nacht</i>	1	0	0	0	0	0	0	0	1	1
<i>Contatto visivo con l'esterno/ Visual contact with outside/Durchsicht</i>	0	0	0	0	0	0	0	0	0	0
<i>Utilizzazione luce diurna/ Daylight utilisation/Tageslichtnutzung</i>	2	2	3	3	3	4	3	2	2	1
<i>Trasmissione energetica/ Heat protection/ sommerlicher Wärmeschutz*</i>	0	0	1	0	0	1	0	0	0	0
	021	003	015	072	124	073	032	029	000	603
<i>Controllo del bagliore/Glare controle/Blendschutz</i>	0	1	0	1	2	2	1	0	0	2
<i>Privacy notturna/Night privacy/Sichtschutz bei Nacht</i>	0	0	0	0	1	1	0	0	0	1
<i>Contatto visivo con l'esterno/ Visual contact with outside/Durchsicht</i>	0	0	0	0	0	0	0	0	0	0
<i>Utilizzazione luce diurna/ Daylight utilisation/Tageslichtnutzung</i>	3	3	3	2	1	2	4	3	4	2
<i>Trasmissione energetica/ Heat protection/ sommerlicher Wärmeschutz***</i>	1	0	0	0	0	0	0	1	1	0

*** vetro C (iso 14501) U= 1,2 g= 0,59

*** glass C (iso 14501) U=1,2 g=0,59

*** verglasung C (iso 14501) U=1,2 g=0,59

Per la classificazione completa secondo la norma EN 14501, vai al sito: www.tenditalia14501.com
Please click here for a complete classification according to Norm EN14501: www.tenditalia14501.com
Für die Klassifikation nach EN 14501 klicken Sie bitte hier : www.tenditalia14501.com