

TENDITALIA
i feel at home



Ed. 9 – 21/06/2023

Panda

Visual comfort

2000 mm ca. 



Visual comfort



Hi tech

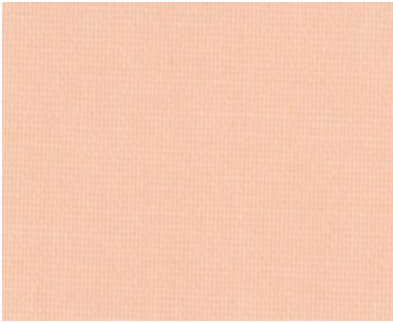


Trend & design

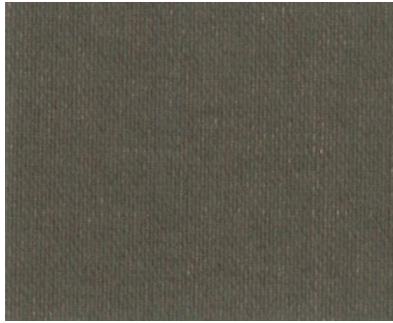


Architectural fabrics

016



072



111



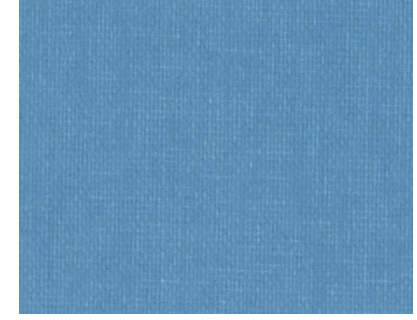
161



031



011



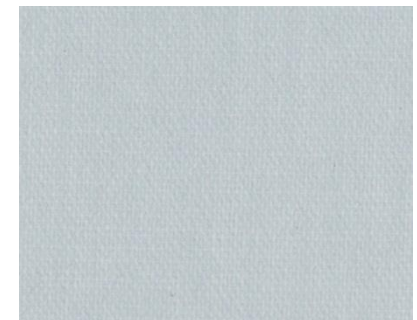
151



003



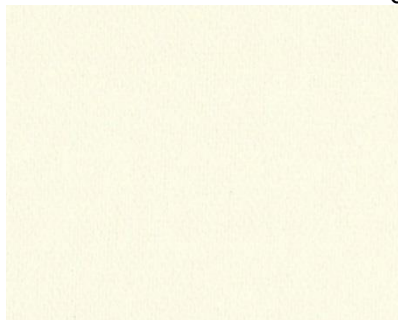
052



006



021



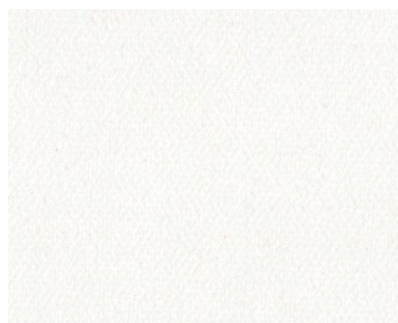
051



000



001



Dati tecnici	Technical details	Technisches Datenblatt	Standard
Altezza tessuto	Fabric height	Breite	2000 mm
Composizione	Fabric description	Materialbeschreibung	100% Poliestere 100% Polyester 100% Polyester
Resinatura	Coating	Beschichtung	100% Copolimeri acrilici e derivati Acrylic copolymer and derivatives Polymeracrylate + derivate
Peso tessuto	Fabric weight	Gewebegewicht	105±5 (g/m ²)
Peso rivestimento	Coating weight	Beschichtungsgewicht	110±5 (g/m ²)
Peso totale	Total weight	Gesamtgewicht	215±10 (g/m ²)
Spessore	Thickness	Stoffdicke	0.30±0.05 mm
Comportamento alla fiamma	Flame resistance	Flammhemmung	Non ignifugo Flammable Einflammbar
Comportamento da appeso (verticali)	Hanging behaviour (vertical) (MA2)** (MA6)**	Hängeverhalten (Vertical Lamellen)	(°) < 10 (mm) < 5
Comportamento da appeso (rullo)	Hanging behaviour (roller) (MA34)**	Hängeverhalten (Rollos)	(%) < 2.0
Stabilità dimensionale (6h, 80°C)	Dimensional stability	Maßbeständigkeit	Trama (Weft, Schuß) <1 (%) Ordito (Warp- Kette) <1 (%)
Manutenzione	Maintenance	Pflege- und Reinigungshinweise	Pulire con panno umido Cleaning with a damp cloth Bedingt feucht abwischbar
Prodotto privo di formaldeide	Formaldehyde Free	Ohne Formaldehyde	No No Nein
Esente da PVC e alogeni	PVC and halogen Free	PVC – und halogenfrei	Si Yes Ja
Protezione da muffe e batteri (trattamento hygieguard)	Guarantees product resistance to attacks and insurgence of bacteria and moulds	Optimaler Schutz in Feuchträumen – fungizid und bakteristatisch	Si Yes Ja
Valori energetici	Energetic value	Energetische Werte	Standard
Stabilità alla luce	Light fastness	Lichtechtheit	≥ 6 (DIN EN ISO 105 B02)

G-tot* (EN 14501)

Color	000	001	021	003	151	161	072	051	052	006	031	016	111	011
G-tot ± 0.01	0.35	0.35	0.37	0.38	0.38	0.38	0.48	0.48	0.38	0.41	0.43	0.40	0.45	0.40

* valore "g tot" calcolato considerando: doppio vetro tipo C (EN 14501) con copertura termoprotettiva e spazio riempito con Argon (U: 1.2 W/m²K e g: 0.59) e tende chiuse

** MA: metodo di analisi interno Tenditalia

*"g tot" value calculated considering Double glazing, with a low emissivity coating, space filled with argon (U: 1.2 W/m²K; g 0.59) curtains closed

**MA: TENDITALIA'S internal method analysis

*Wert "g tot" berechnet Doppelverglasung mit thermoreflektierender Beschichtung "Zwischenraum mit Argon gefüllt" (U: 1,2 W/m² K und g=0,59) bei geschlossenem Lamellenvorhang

**MA: Tenditalia interne Prüfmethode

Comportamento alla luce Behaviour to the light Lichtreflektion
(EN 410) (380-780nm campo luce visibile)

Color ± 2%	000	001	021	003	151	161	072	051	052	006	031	016	111	011
Riflessione luce / light reflection / Reflektion	74	72	70	66	63	50	20	24	60	63	56	59	31	53
Trasmissione / light transmission / Transmission	23	21	17	11	6	3	0	0	9	10	15	9	0	1
Assorbimento / light absorption / Absorption	3	7	13	23	31	47	80	76	31	27	29	32	69	46

Comportamento al calore Behaviour to the heat Wärmereflektion
(EN 410) (380-2500nm) (%)

Color ± 2%	000	001	021	003	151	161	072	051	052	006	031	016	111	011
Riflessione calore / heat reflection / Reflektion	68	67	62	58	57	54	24	24	57	46	51	63	33	50
Trasmissione / heat transmission / Transmission	22	23	16	15	16	17	3	3	15	9	19	13	3	4
Assorbimento / heat absorption / Absorption	10	10	22	27	27	29	73	73	28	45	30	24	64	46

Trasmissione UV UV transmission UV Transmission
(EN 410)

Color ± 2%	000	001	021	003	151	161	072	051	052	006	031	016	111	011
	0.01	0.01	0.01	0.01	0.00	0.00	0.00	0.00	0.01	0.01	0.01	0.01	0.00	0.00

Riflessione della luce interna Internal light reflection Lichtreflektion der Innenseite
(EN 410)

Color ± 2%	000	001	021	003	151	161	072	051	052	006	031	016	111	011
	-	-	-	-	-	-	-	-	-	-	-	-	-	-

Classificazione di schermatura Performance classes Leistungsklasse

(EN 14501)	000	001	021	003	151	161	072	051	052	006	031	016	111	011
Controllo del bagliore/Glare controle/Blendschutz	2	2	2	3	3	3	4	4	3	3	3	3	4	3
Privacy notturna/Night privacy/Sichtschutz bei Nacht	0	0	0	1	1	1	2	2	1	1	1	1	2	1
Contatto visivo con l'esterno/ Visual contact with outside/Durchsicht	0	0	0	0	0	0	0	0	0	0	0	0	0	0
Utilizzazione luce diurna/ Daylight utilisation/Tageslichtnutzung	2	2	2	1	1	1	0	0	1	1	1	1	0	1
Trasmissione energetica/ Heat protection/ sommerlicher Wärmeschutz***	1	1	1	1	1	1	1	1	1	1	1	1	1	1
*** vetro C (iso 14501) U= 1,2 g= 0,59														
*** glass C (iso 14501) U=1,2 g=0,59														
*** verglasung C (iso 14501) U=1,2 g=0,59														

Per la classificazione completa secondo la norma EN 14501, vai al sito: www.tenditalia14501.com
Please click here for a complete classification according to Norm EN14501: www.tenditalia14501.com
Für die Klassifikation nach EN 14501 klicken Sie bitte hier : www.tenditalia14501.com