

TENDITALIA
I feel at home

Ed. 8 – 21/06/2023

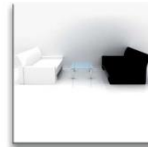
Flash

Visual comfort

2000 mm ca.



Visual comfort



Hi tech

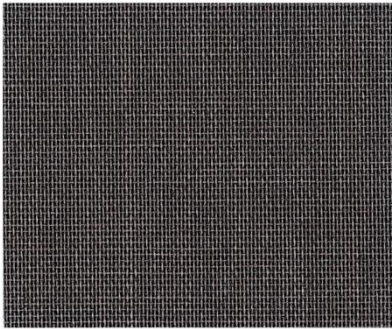


Trend & design

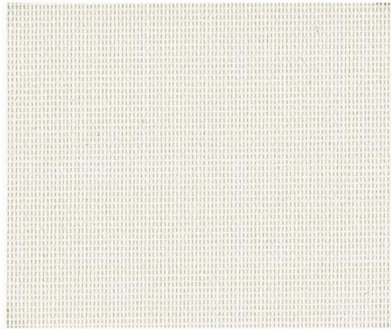


Architectural fabrics

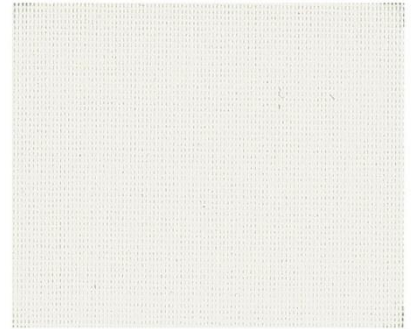
072



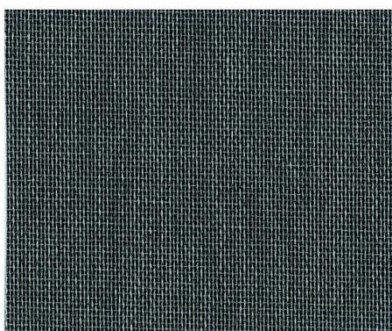
021



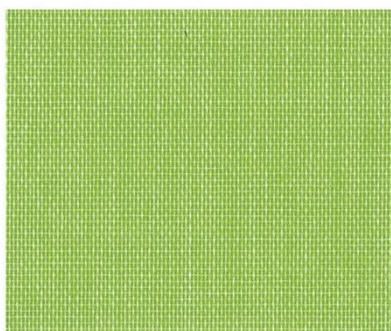
001



051



006



000



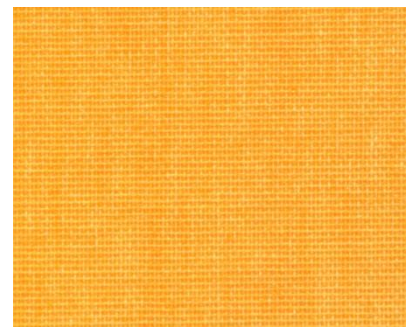
112



132



151



Dati tecnici	Technical details	Technisches Datenblatt	Standard
Altezza tessuto	Fabric height	Breite	2000 mm
Composizione	Fabric description	Materialbeschreibung	100% Poliestere 100% Polyester 100% Polyester
Resinatura	Coating	Beschichtung	100% Copolimeri acrilici e derivati 100% Acrylic copolymer and derivatives Polymeracrylate + Derivate
Peso tessuto	Fabric weight	Gewebegewicht	105±5 (g/m ²)
Peso rivestimento	Coating weight	Beschichtungsgewicht	55±5 (g/m ²)
Peso totale	Total weight	Gesamtgewicht	160±10 (g/m ²)
Spessore	Thickness	Stoffdicke	0.27±0.05 mm
Comportamento alla fiamma	Flame resistance	Flammhemmung	Non ignifugo Flammable Entflammbar
Comportamento da appeso (verticali)	Hanging behaviour (vertical) (MA2)** (MA6)**	Hängeverhalten (Vertical Lamellen)	(°) < 10 (mm) < 5
Comportamento da appeso (rullo)	Hanging behaviour (roller) (MA34)**	Hängeverhalten (Rollos)	(%) < 2.0
Stabilità dimensionale (6h, 80°C)	Dimensional stability	Maßbeständigkeit	Trama (Weft, Schuß) <1 (%) Ordito (Warp- Kette) <1 (%)
Manutenzione	Maintenance	Pflege- und Reinigungshinweise	Pulire con panno umido Cleaning with a damp cloth Bedingt feucht abwischbar
Prodotto privo di formaldeide	Formaldehyde Free	Ohne Formaldehyde	Si Yes Ja
Esente da PVC e alogeni	PVC and halogen Free	PVC – und halogenfrei	No No Nein
Protezione da muffe e batteri (trattamento hygienguard)	Guarantees product resistance to attacks and insurgence of bacteria and moulds	Optimaler Schutz in Feuchträumen – fungizid und bakteristatisch	Si Yes Ja
Valori energetici	Energetic value	Energetische Werte	Standard
Stabilità alla luce	Light fastness	Lichtechtheit	≥ (DIN EN ISO 105 B02)
G-tot* (EN 14501)			
Color			000 001 021 072 112 006 051 132 151
G-tot ± 0.01			0.44 0.44 0.44 0.55 0.55 0.50 0.55 0.45 0.45

* valore "g tot" calcolato considerando: doppio vetro tipo C (EN 14501) con copertura termoprotettiva e spazio riempito con Argon (U: 1.6 W/m²K e g: 0.70) e tende chiuse

** MA: metodo di analisi interno Tenditalia

* g value calculated considering double glazing, with a low emissivity coating, space filled with argon (U: 1.6 W/m²K; g 0,70) curtains closed

**MA: TENDITALIA'S internal method analysis

*Wert "g tot" berechnet Doppelverglasung mit thermoreflektierender Beschichtung "Zwischenraum mit Argon gefüllt" (U: 1,6 W/m² K und g=0,70) bei geschlossenem Lamellenvorhang

**MA: Tenditalia interne Prüfmethode

Comportamento alla luce Behaviour to the light Lichtreflektion
 (EN 410) (380–780nm campo luce visibile)

Color ± 2%	000	001	021	072	112	006	051	132	151
Riflessione luce / light reflection / Reflektion	35	40	39	15	19	33	12	29	35
Trasmissione / light transmission / Transmission	63	55	55	3	3	31	4	43	26
Assorbimento / light absorption / Absorption	2	5	6	82	78	36	84	28	39

Comportamento al calore Behaviour to the heat
 (EN 410) (380–2500nm) (%)

Wärmereflektion

Color ± 2%	000	001	021	072	112	006	051	132	151
Riflessione calore / heat reflection / Reflektion	-	-	-	-	-	-	-	-	-
Trasmissione / heat transmission / Transmission	-	-	-	-	-	-	-	-	-
Assorbimento / heat absorption / Absorption	-	-	-	-	-	-	-	-	-

Trasmissione UV UV transmission UV Transmission
 (EN 410)

Color ± 2%	000	001	021	072	112	006	051	132	151
	-	-	-	-	-	-	-	-	-

Riflessione della luce interna Internal light reflection Lichtreflektion der Innenseite
 (EN 410)

Color ± 2%	000	001	021	072	112	006	051	132	151
	-	-	-	-	-	-	-	-	-

Classificazione di schermatura Performance classes Leistungsklasse
 (EN 14501)

	000	001	021	072	112	006	051	132	151
Controllo del bagliore/Glare controle/Blendschutz	0	0	0	1	1	0	1	1	1
Privacy notturna/Night privacy/Sichtschutz bei Nacht	0	0	0	1	1	0	1	0	0
Contatto visivo con l'esterno/ Visual contact with outside/Durchsicht	0	0	0	0	0	0	0	0	0
Utilizzazione luce diurna/ Daylight utilisation/Tageslichtnutzung	4	4	4	2	2	3	2	3	3
Trasmissione energetica/Heat protection / sommerlicher Wärmeschutz***	1	1	1	0	0	0	0	1	1

*** vetro C (iso 14501) U= 1,2 g= 0,59

*** glass C (iso 14501) U=1,2 g=0,59

*** verglasung C (iso 14501) U=1,2 g=0,59

Per la classificazione completa secondo la norma EN 14501, vai al sito: www.tenditalia14501.com
 Please click here for a complete classification according to Norm EN14501: www.tenditalia14501.com
 Für die Klassifikation nach EN 14501 klicken Sie bitte hier : www.tenditalia14501.com