

TENDITALIA
I feel at home



Ed. 8 - 29/07/2020

Patagonia

Visual comfort



2000mm ca. \longleftrightarrow



Visual comfort



Hi tech

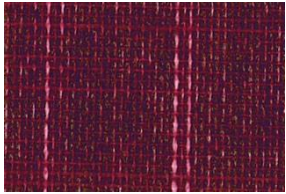


Trend & design

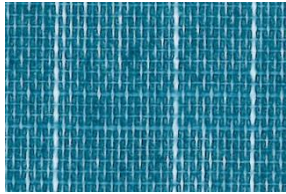


Architectural fabrics

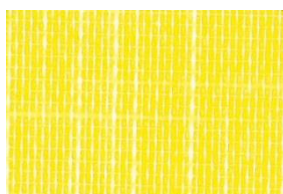
126



119



153



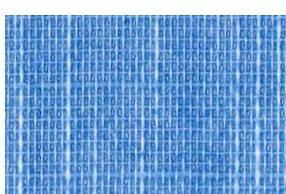
066



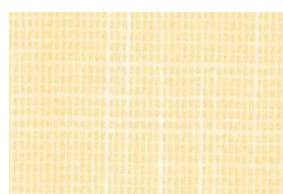
124



117



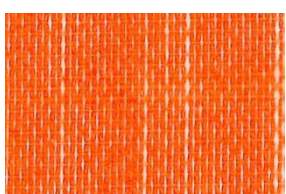
015



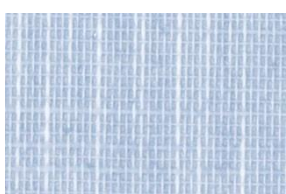
003



072



111



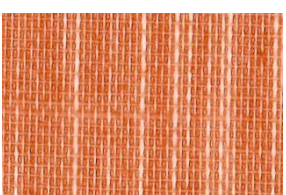
028



029



073



058



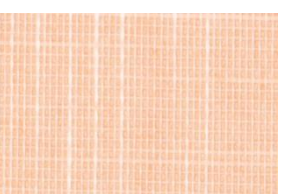
001



021



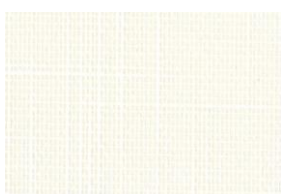
032



005



000



603



Dati tecnici	Technical details	Technisches Datenblatt	Standard
Altezza tessuto	Fabric height	Breite	2000 mm
Composizione	Fabric description	Materialbeschreibung	100% Poliestere 100% Polyester 100% Polyester
Resinatura	Coating	Beschichtung	100% <small>Copolimeri acrilici e derivati Acrylic copolymer and derivatives Polymeracrylate + Derivate</small>
Peso tessuto	Fabric weight	Gewebegewicht	110±5 (g/m ²)
Peso rivestimento	Coating weight	Beschichtungsgewicht	80 ±5 (g/m ²)
Peso totale	Total weight	Gesamtgewicht	190±10 (g/m ²)
Spessore	Thickness	Stoffdicke	0.40±0.05 mm
Comportamento alla fiamma	Flame resistance	Flammhemmung	Non ignifugo Flammable Einflammbar
Comportamento da appeso (verticali)	Hanging behaviour (vertical) (MA2)** (MA6)**	Hängeverhalten (Vertical Lamellen)	(°) < 10 (mm) < 5
Comportamento da appeso (rullo)	Hanging behaviour (roller) (MA34)**	Hängeverhalten (Rollos)	(%) < 2.0
Stabilità dimensionale (6h, 80°C)	Dimensional stability	Maßbeständigkeit	Trama (Weft, Schuß) <1 (%) Ordito (Warp- Kette) <1 (%)
Manutenzione	Maintenance	Pflege- und Reinigungshinweise	Pulire con panno umido Cleaning with a damp cloth Bedingt feucht abwischbar
Valori energetici	Energetic value	Energetische Werte	Standard
Grado di brillantezza	Degree of brightness	Glanzgrad (DIN67530)***	-

G-tot* (EN 14501)

Color	058	005	028	153	066	001	111	117	119	126
G-tot* ± 0.01	0.58	0.53	0.49	0.51	0.52	0.44	0.52	0.56	0.58	0.60
	021	003	015	072	124	073	032	029	000	603
	0.49	0.52	0.50	0.57	0.60	0.58	0.50	0.49	0.49	0.59

* valore "g tot" calcolato considerando: doppio vetro tipo C (EN 14501) con copertura termoprotettiva e spazio riempito con Argon (U: 1.2 W/m2K e g: 0.59) e tende chiuse

** MA: metodo di analisi interno Tenditalia

*** misura al rifrattometro con inclinazione raggi di 60°: valori < 30 (valore di brillantezza, numero privo di unità di misura) corrispondono ad una valutazione di superficie "opaca"; valori compresi tra 30 e 70, indicano una superficie "normalmente brillante"; valori > 70 indicano una superficie "molto brillante"

**"g tot" value calculated considering double glazing, with a low emissivity coating, space filled with argon (U: 1.2 W/m2K; g 0.59) curtains closed

**MA: TENDITALIA'S internal method analysis

***measures on a refractometer with rays inclined at 60°: values <30 (brightness value, a number without unit of measurement) correspond to an "opaque" surface rating; values between 30 and 70 indicate a "very bright" surface

*Wert "g tot" berechnet Doppelverglasung mit thermoreflektierender Beschichtung "Zwischenraum mit Argon gefüllt" (U: 1,2 W/m2 K und g=0,59) bei geschlossenem Lamellenvorhang

**MA: Tenditalia interne Prüfmethode

***Reflektometerwert bei 60°:-Werte<30 (Glanzzahl als dimensionslose Zahl) entsprechen der subjektiven Einschätzung "matt/stumpf"; Werte zwischen 30 und 70 entsprechen der subjektiven Einschätzung "normal glänzend", Werte>70 entsprechen der subjektiven Einschätzung einer "hoch glänzende" Oberfläche

Stabilità alla luce

(DIN EN ISO 105 B02)

Color	≥	Light fastness									
		058	005	028	153	066	001	111	117	119	126
		6	6	6	6	6	6	6	6	6	6
		Lichtechtheit									
		021	003	015	072	124	073	032	029	000	603
		6	6	6	6	6	6	6	6	4	6

Comportamento alla luce

(EN 410) (380-780nm campo luce visibile)

Color	± 2%	Behaviour to the light										
		058	005	028	153	066	001	111	117	119	126	
		Riflessione luce / light reflection / Reflektion	18	32	42	35	39	46	40	20	19	16
		Trasmissione / light transmission / Transmission	12	24	28	25	23	49	24	20	15	1
		Assorbimento / light absorption / Absorption	70	44	30	40	38	5	36	60	66	83
		Lichtreflektion										
			021	003	015	072	124	073	032	029	000	603
		Riflessione luce / light reflection / Reflektion	40	36	42	20	24	30	40	42	48	20
		Trasmissione / light transmission / Transmission	30	27	25	15	1	21	49	28	50	12
		Assorbimento / light absorption / Absorption	30	37	33	65	75	49	11	30	2	68

Trasmissione UV

(EN 410)

Color	± 2%	UV transmission										
		058	005	028	153	066	001	111	117	119	126	
		-	-	-	-	-	-	-	-	-	-	
		UV Transmission										
			021	003	015	072	124	073	032	029	000	603
		-	-	-	-	-	-	-	-	-	-	

Riflessione della luce interna

(EN 410)

Color	± 2%	Internal light reflection										
		058	005	028	153	066	001	111	117	119	126	
		-	-	-	-	-	-	-	-	-	-	
		Lichtreflektion der Innenseite										
			021	003	015	072	124	073	032	029	000	603
		-	-	-	-	-	-	-	-	-	-	

Per la classificazione completa secondo la norma EN 14501, vai al sito: www.tenditalia14501.com

Please click here for a complete classification according to Norm EN14501: www.tenditalia14501.com

Für die Klassifikation nach EN 14501 klicken Sie bitte hier : www.tenditalia14501.com